



Royal Golf, Bansko

Ap. No	Floor	Type	View	Living Area (in sq.m.)	Total Area (in sq.m.)	Pice per sq.m. (Euro)	Total Price (Euro)
A1	I	2 rooms	S-W	40.60	49.34	1 240	61 182
A2	I	2 rooms	S-W	47.40	57.61	1 240	71 436
A3	I	2 rooms	N-W	45.80	55.66	1 240	69 018
A4	I	2 rooms	N-W	50.50	61.37	1 270	77 940
A5	I	2 rooms	N-E	53.60	65.14	1 270	82 728
A6	I	2 rooms	N-E	53.40	64.90	1 270	82 423
A7	I	3 rooms	N-E	67.50	82.03	1 270	104 178
A8	I	2 rooms	S-E	52.90	64.29	1 270	81 648
A9	I	3 rooms	S-E	59.60	72.43	1 270	91 986
A10	I	3 rooms	W	60.90	74.01	1 240	91 772
A11	II	2 rooms	S-W	40.60	49.34	1 320	65 129
A12	II	2 rooms	S-W	50.80	61.74	1 320	81 497
A13	II	2 rooms	N-W	52.60	63.92	1 320	84 374
A14	II	2 rooms	N-W	50.10	60.89	1 320	80 375
A15	II	2 rooms	N-E	53.60	65.14	1 320	85 985
A16	II	2 rooms	N-E	53.40	64.90	1 320	85 668
A17	II	3 rooms	N-E	67.50	82.03	1 320	108 280
A18	II	2 rooms	S-E	52.90	64.29	1 320	84 863
A19	II	3 rooms	S-E	59.60	72.43	1 320	95 608
A20	II	3 rooms	W	60.90	74.01	1 320	97 693
A21	III	2 rooms	S-W	40.60	49.34	1 350	66 609
A22	III	2 rooms	S-W	50.80	61.74	1 350	83 349
A23	III	2 rooms	N-W	52.60	63.92	1 350	86 292
A24	III	2 rooms	N-W	50.10	60.89	1 350	82 202
A25	III	2 rooms	N-E	53.60	65.14	1 350	87 939
A26	III	2 rooms	N-E	53.40	64.90	1 350	87 615
A27	III	3 rooms	N-E	67.50	82.03	1 350	110 741
A28	III	2 rooms	S-E	52.90	64.29	1 350	86 792
A29	III	3 rooms	S-E	59.60	72.43	1 350	97 781
A30	III	3 rooms	W	60.90	74.01	1 350	99 914
A31	IV	2 rooms	S-W	40.60	49.34	1 400	69 076
A32	IV	2 rooms	S-W	50.80	61.74	1 400	86 436
A33	IV	2 rooms	N-W	52.60	63.92	1 400	89 488
A34	IV	2 rooms	N-W	50.10	60.89	1 400	85 246
A35	IV	2 rooms	N-E	53.60	65.14	1 400	91 196
A36	IV	2 rooms	N-E	53.40	64.90	1 400	90 860
A37	IV	3 rooms	N-E	67.50	82.03	1 400	114 842
A38	IV	2 rooms	S-E	52.90	64.29	1 400	90 006
A39	IV	3 rooms	S-E	59.60	72.43	1 400	101 402
A40	IV	3 rooms	W	60.90	74.01	1 400	103 614
A41	V	4 rooms	S-W	65.40	74.25	1 300	96 525
A42	V	4 rooms	S-W	63.50	69.83	1 300	90 779
A43	V	3 rooms	N-W	74.60	90.66	1 370	124 204
A44	V	2 rooms	N-W	50.50	61.37	1 400	85 918

A45	V	4 rooms	N-E	65.10	71.92	1 300	93 496
A46	V	studio	N-E	43.60	52.99	1 370	72 596
A47	V	studio	N-E	31.70	38.52	1 400	53 928
A48	V	3 rooms	S-E	67.50	82.03	1 400	114 842
A49	V	studio	S-E	31.60	38.40	1 400	53 760
A50	V	2 rooms	S-E	38.60	46.91	1 370	64 267
A51	V	4 rooms	S-E	77.50	86.59	1 300	112 567
A52	V	3 rooms	W	60.90	74.01	1 370	101 394
A53	VI	2 rooms	N-E	38.00	46.18	1 350	62 343
A54	VI	3 rooms	N-ES	70.30	85.44	1 370	117 053
A55	VI	3 rooms	S-E	64.60	78.51	1 350	105 989
D1	I	2 rooms	S	40.60	49.34	1 240	61 182
D2	I	2 rooms	S-E	47.40	57.61	1 240	71 436
D3	I	2 rooms	S-E	45.80	55.66	1 240	69 018
D4	I	2 rooms	N-ES	50.50	61.37	1 270	77 940
D5	I	2 rooms	N-W	53.60	65.14	1 270	82 728
D6	I	2 rooms	N-W	53.40	64.90	1 270	82 423
D7	I	3 rooms	N-W	67.50	82.03	1 270	104 178
D8	I	2 rooms	W	52.90	64.29	1 270	81 648
D9	I	3 rooms	W	59.60	72.43	1 270	91 986
D10	I	3 rooms	S	60.90	74.01	1 240	91 772
D11	II	2 rooms	S	40.60	49.34	1 320	65 129
D12	II	2 rooms	S-E	50.80	61.74	1 320	81 497
D13	II	2 rooms	S-E	52.60	63.92	1 320	84 374
D14	II	2 rooms	N-ES	50.10	60.89	1 320	80 375
D15	II	2 rooms	N-W	53.60	65.14	1 320	85 985
D16	II	2 rooms	N-W	53.40	64.90	1 320	85 668
D17	II	3 rooms	N-W	67.50	82.03	1 320	108 280
D18	II	2 rooms	W	52.90	64.29	1 320	84 863
D19	II	3 rooms	W	59.60	72.43	1 320	95 608
D20	II	3 rooms	S	60.90	74.01	1 320	97 693
D21	III	2 rooms	S	40.60	49.34	1 350	66 609
D22	III	2 rooms	S-E	50.80	61.74	1 350	83 349
D23	III	2 rooms	S-E	52.60	63.92	1 350	86 292
D24	III	2 rooms	N-ES	50.10	60.89	1 350	82 202
D25	III	2 rooms	N-W	53.60	65.14	1 350	87 939
D26	III	2 rooms	N-W	53.40	64.90	1 350	87 615
D27	III	3 rooms	N-W	67.50	82.03	1 350	110 741
D28	III	2 rooms	W	52.90	64.29	1 350	86 792
D29	III	3 rooms	W	59.60	72.43	1 350	97 781
D30	III	3 rooms	S	60.90	74.01	1 350	99 914
D31	IV	2 rooms	S	40.60	49.34	1 400	69 076
D32	IV	2 rooms	S-E	50.80	61.74	1 400	86 436
D33	IV	2 rooms	S-E	52.60	63.92	1 400	89 488
D34	IV	2 rooms	N-ES	50.10	60.89	1 400	85 246
D35	IV	2 rooms	N-W	53.60	65.14	1 400	91 196
D36	IV	2 rooms	N-W	53.40	64.90	1 400	90 860
D37	IV	3 rooms	N-W	67.50	82.03	1 400	114 842
D38	IV	2 rooms	W	52.90	64.29	1 400	90 006
D39	IV	3 rooms	W	59.60	72.43	1 400	101 402
D40	IV	3 rooms	S	60.90	74.01	1 400	103 614
D41	V	4 rooms	S	65.40	74.25	1 300	96 525

D42	V	4 rooms	S	63.50	69.83	1 300	90 779
D43	V	3 rooms	S-E	74.60	90.66	1 370	124 204
D44	V	2 rooms	N-ES	50.50	61.37	1 400	85 918
D45	V	4 rooms	N-W	65.10	71.92	1 300	93 496
D46	V	studio	N-W	43.60	52.99	1 370	72 596
D47	V	studio	N-W	31.70	38.52	1 400	53 928
D48	V	3 rooms	N-W	67.50	82.03	1 400	114 842
D49	V	studio	W	31.60	38.40	1 400	53 760
D50	V	2 rooms	W	38.60	46.91	1 370	64 267
D51	V	4 rooms	W	77.50	86.59	1 300	112 567
D52	V	3 rooms	S	60.90	74.01	1 370	101 394
D53	VI	2 rooms	N-W	38.00	46.18	1 350	62 343
D54	VI	3 rooms	N-W	70.30	85.44	1 370	117 053
D55	VI	3 rooms	W	64.60	78.51	1 350	105 989
B1	I	studio	S-E	36.40	44.24	1 250	55 300
B2	I	2 rooms	S-E	48.60	59.06	1 240	73 234
B3	I	2 rooms	W	53.20	64.65	1 240	80 166
B4	I	2 rooms	W	53.10	64.53	1 240	80 017
B5	II	studio	S-E	36.40	44.24	1 350	59 724
B6	II	2 rooms	S-E	48.60	59.06	1 320	77 959
B7	II	2 rooms	W	53.20	64.65	1 320	85 338
B8	II	2 rooms	W	53.10	64.53	1 320	85 180
B9	III	studio	S-E	36.40	44.24	1 370	60 609
B10	III	2 rooms	S-E	48.60	59.06	1 350	79 731
B11	III	2 rooms	W	53.20	64.65	1 350	87 278
B12	III	2 rooms	W	53.10	64.53	1 350	87 116
B13	IV	studio	S-E	36.40	44.24	1 420	62 821
B14	IV	2 rooms	S-E	48.60	59.06	1 400	82 684
B15	IV	2 rooms	W	53.20	64.65	1 400	90 510
B16	IV	2 rooms	W	53.10	64.53	1 400	90 342
B17	V	studio	S-E	36.40	44.24	1 420	62 821
B18	V	2 rooms	S-E	48.60	59.06	1 400	82 684
B19	V	2 rooms	W	53.20	64.65	1 400	90 510
B20	V	2 rooms	W	53.10	64.53	1 400	90 342
B21	VI	4 rooms	S-E	75.90	84.06	1 300	109 278
B22	VI	4 rooms	S-E	93.20	103.49	1 300	134 537
B23	VI	2 rooms	W	53.70	65.26	1 350	88 101
B24	VI	2 rooms	W	52.50	63.80	1 350	86 130
E1	groundfloor	2 rooms	S-E	50.90	61.86	1 200	74 232
E2	I	studio	W	36.40	44.24	1 250	55 300
E3	I	2 rooms	W	48.60	59.06	1 240	73 234
E4	I	2 rooms	S-E	53.20	64.65	1 240	80 166
E5	I	2 rooms	S-E	53.10	64.53	1 240	80 017
E6	II	studio	W	36.40	44.24	1 350	59 724
E7	II	2 rooms	W	48.60	59.06	1 320	77 959
E8	II	2 rooms	S-E	53.20	64.65	1 320	85 338
E9	II	2 rooms	S-E	53.10	64.53	1 320	85 180
E10	III	studio	W	36.40	44.24	1 370	60 609
E11	III	2 rooms	W	48.60	59.06	1 350	79 731
E12	III	2 rooms	S-E	53.20	64.65	1 350	87 278
E13	III	2 rooms	S-E	53.10	64.53	1 350	87 116
E14	IV	studio	W	36.40	44.24	1 420	62 821

E15	IV	2 rooms	W	48.60	59.06	1 400	82 684
E16	IV	2 rooms	S-E	53.20	64.65	1 400	90 510
E17	IV	2 rooms	S-E	53.10	64.53	1 400	90 342
E18	V	studio	W	36.40	44.24	1 420	62 821
E19	V	2 rooms	W	48.60	59.06	1 400	82 684
E20	V	2 rooms	S-E	53.20	64.65	1 400	90 510
E21	V	2 rooms	S-E	53.10	64.53	1 400	90 342
E22	VI	4 rooms	W	75.90	84.06	1 300	109 278
E23	VI	4 rooms	W	93.20	103.49	1 300	134 537
E24	VI	2 rooms	S-E	53.70	65.26	1 350	88 101
E25	VI	2 rooms	S-E	52.50	63.80	1 350	86 130
C1	groundfloor	studio	W	35.70	43.39	1 200	52 068
C2	groundfloor	studio	W	35.00	42.54	1 200	51 048
C3	groundfloor	2 rooms	W	53.10	64.53	1 200	77 436
C4	I	2 rooms	S-E	53.70	65.26	1 240	80 922
C5	I	studio	S-E	35.80	43.51	1 220	53 082
C6	I	studio	E	16.40	19.93	1 170	23 318
C7	I	3 rooms	S-E	63.70	77.41	1 250	96 763
C8	I	3 rooms	S-E	63.70	77.41	1 260	97 537
C9	I	studio	S-E	34.90	42.41	1 270	53 861
C10	I	studio	S-E	34.90	42.41	1 270	53 861
C11	I	3 rooms	S-W	63.40	77.05	1 260	97 083
C12	I	studio	W	37.10	45.09	1 270	57 264
C13	I	2 rooms	W	51.50	62.59	1 260	78 863
C14	I	2 rooms	W	54.00	65.63	1 260	82 694
C15	II	2 rooms	S-E	53.70	65.26	1 320	86 143
C16	II	studio	S-E	35.80	43.51	1 240	53 952
C17	II	studio	E	16.40	19.93	1 200	23 916
C18	II	3 rooms	S-E	66.10	80.33	1 310	105 232
C19	II	3 rooms	S-E	66.10	80.33	1 320	106 036
C20	II	studio	S	36.10	43.87	1 330	58 347
C21	II	studio	S	36.10	43.87	1 330	58 347
C22	II	3 rooms	S-W	65.80	79.97	1 320	105 560
C23	II	studio	W	37.10	45.09	1 330	59 970
C24	II	2 rooms	W	51.50	62.59	1 320	82 619
C25	II	2 rooms	W	54.00	65.63	1 320	86 632
C26	III	2 rooms	S-E	53.70	65.26	1 320	86 143
C27	III	studio	S-E	35.80	43.51	1 270	55 258
C28	III	studio	E	16.40	19.93	1 200	23 916
C29	III	3 rooms	S-E	66.10	80.33	1 340	107 642
C30	III	3 rooms	S-E	66.10	80.33	1 340	107 642
C31	III	studio	S	36.10	43.87	1 360	59 663
C32	III	studio	S	36.10	43.87	1 360	59 663
C33	III	3 rooms	S-W	65.80	79.97	1 340	107 160
C34	III	studio	W	37.10	45.09	1 360	61 322
C35	III	2 rooms	W	51.50	62.59	1 350	84 497
C36	III	2 rooms	W	54.00	65.63	1 350	88 601
C37	IV	2 rooms	S-E	53.70	65.26	1 320	86 143
C38	IV	studio	S-E	35.80	43.51	1 270	55 258
C40	IV	3 rooms	S-E	66.10	80.33	1 390	111 659
C41	IV	3 rooms	S-E	66.10	80.33	1 390	111 659
C42	IV	studio	S	36.10	43.87	1 410	61 857

C43	IV	studio	S	36.10	43.87	1 410	61 857
C44	IV	3 rooms	S-W	65.80	79.97	1 390	111 158
C45	IV	studio	W	37.10	45.09	1 410	63 577
C46	IV	2 rooms	W	51.50	62.59	1 400	87 626
C47	IV	2 rooms	W	54.00	65.63	1 400	91 882
C48	V	2 rooms	S-E	53.70	65.26	1 320	86 143
C49	V	studio	S-E	35.80	43.51	1 270	55 258
C50	V	studio	E	16.40	19.93	1 200	23 916
C51	V	3 rooms	S-E	66.10	80.33	1 390	111 659
C52	V	3 rooms	S-E	66.10	80.33	1 400	112 462
C53	V	studio	S	36.10	43.87	1 410	61 857
C54	V	studio	S	36.10	43.87	1 410	61 857
C55	V	3 rooms	S-W	65.80	79.97	1 400	111 958
C56	V	studio	W	37.10	45.09	1 410	63 577
C57	V	2 rooms	W	51.50	62.59	1 400	87 626
C58	V	2 rooms	W	54.00	65.63	1 400	91 882
C59	VI	4 rooms	S-E	88.60	97.49	1 300	126 737
C60	VI	2 rooms	S-E	46.30	56.27	1 270	71 463
C61	VI	studio	E	16.40	19.93	1 200	23 916
C62	VI	3 rooms	S-E	65.90	80.09	1 350	108 122
C63	VI	3 rooms	S-E	65.90	80.09	1 350	108 122
C64	VI	studio	S	35.60	43.26	1 360	58 834
C65	VI	studio	S	35.60	43.26	1 360	58 834
C66	VI	3 rooms	S-W	65.80	79.97	1 350	107 960
C67	VI	studio	W	36.70	44.60	1 360	60 656
C68	VI	2 rooms	W	50.70	61.62	1 350	83 187
C69	VI	2 rooms	W	53.30	64.78	1 350	87 453
C70	VII	3 rooms	W	64.00	77.78	1 170	91 003
C71	VII	3 rooms	S-W	68.60	83.37	1 300	108 381
C72	VII	2 rooms	S	49.20	59.79	11 703	699 722
F1	groundfloor	2 rooms	S-E	49.50	60.16	1 200	72 192
F2	groundfloor	2 rooms	S-E	49.10	59.67	1 200	71 604
F3	groundfloor	studio	S-E	35.00	42.54	1 200	51 048
F4	groundfloor	2 rooms	S-E	53.10	64.53	1 200	77 436
F5	I	2 rooms	N-W	53.70	65.26	1 240	80 922
F6	I	studio	N-W	35.80	43.51	1 220	53 082
F7	I	studio	N-W	16.40	19.93	1 170	23 318
F8	I	3 rooms	N-W	63.70	77.41	1 250	96 763
F9	I	3 rooms	S-W	63.70	77.41	1 260	97 537
F10	I	studio	S	34.90	42.41	1 270	53 861
F11	I	studio	S	34.90	42.41	1 270	53 861
F12	I	3 rooms	S-E	63.40	77.05	1 260	97 083
F13	I	studio	S-E	37.10	45.09	1 270	57 264
F14	I	2 rooms	S-E	51.50	62.59	1 260	78 863
F15	I	2 rooms	S-E	54.00	65.63	1 260	82 694
F16	II	2 rooms	N-W	53.70	65.26	1 320	86 143
F17	II	studio	N-W	35.80	43.51	1 240	53 952
F18	II	studio	N-W	16.40	19.93	1 200	23 916
F19	II	3 rooms	N-W	66.10	80.33	1 310	105 232
F20	II	3 rooms	S-W	66.10	80.33	1 320	106 036
F21	II	studio	S	36.10	43.87	1 330	58 347
F22	II	studio	S	36.10	43.87	1 330	58 347

F23	II	3 rooms	S-E	65.80	79.97	1 320	105 560
F24	II	studio	S-E	37.10	45.09	1 330	59 970
F25	II	2 rooms	S-E	51.50	62.59	1 320	82 619
F26	II	2 rooms	S-E	54.00	65.63	1 320	86 632
F27	III	2 rooms	N-W	53.70	65.26	1 320	86 143
F28	III	studio	N-W	35.80	43.51	1 270	55 258
F29	III	studio	N-W	16.40	19.93	1 200	23 916
F30	III	3 rooms	N-W	66.10	80.33	1 340	107 642
F31	III	3 rooms	S-W	66.10	80.33	1 340	107 642
F32	III	studio	S	36.10	43.87	1 360	59 663
F33	III	studio	S	36.10	43.87	1 360	59 663
F34	III	3 rooms	S-E	65.80	79.97	1 340	107 160
F35	III	studio	S-E	37.10	45.09	1 360	61 322
F36	III	2 rooms	S-E	51.50	62.59	1 350	84 497
F37	III	2 rooms	S-E	54.00	65.63	1 350	88 601
F38	IV	2 rooms	N-W	53.70	65.26	1 320	86 143
F39	IV	studio	N-W	35.80	43.51	1 270	55 258
F40	IV	studio	N-W	16.40	19.93	1 200	23 916
F41	IV	3 rooms	N-W	66.10	80.33	1 390	111 659
F42	IV	3 rooms	S-W	66.10	80.33	1 390	111 659
F43	IV	studio	S	36.10	43.87	1 410	61 857
F44	IV	studio	S	36.10	43.87	1 410	61 857
F45	IV	3 rooms	S-E	65.80	79.97	1 390	111 158
F46	IV	studio	S-E	37.10	45.09	1 410	63 577
F47	IV	2 rooms	S-E	51.50	62.59	1 400	87 626
F48	IV	2 rooms	S-E	54.00	65.63	1 400	91 882
F49	V	2 rooms	N-W	53.70	65.26	1 320	86 143
F50	V	studio	N-W	35.80	43.51	1 270	55 258
F51	V	studio	N-W	16.40	19.93	1 200	23 916
F52	V	3 rooms	N-W	66.10	80.33	1 390	111 659
F53	V	3 rooms	S-W	66.10	80.33	1 400	112 462
F54	V	studio	S	36.10	43.87	1 410	61 857
F55	V	studio	S	36.10	43.87	1 410	61 857
F56	V	3 rooms	S-E	65.80	79.97	1 400	111 958
F57	V	studio	S-E	37.10	45.09	1 410	63 577
F58	V	2 rooms	S-E	51.50	62.59	1 400	87 626
F59	V	2 rooms	S-E	54.00	65.63	1 400	91 882
F60	VI	4 rooms	N-W	88.60	97.49	1 300	126 737
F61	VI	2 rooms	N-W	46.30	56.27	1 270	71 463
F62	VI	studio	N-W	16.40	19.93	1 200	23 916
F63	VI	3 rooms	N-W	65.90	80.09	1 350	108 122
F64	VI	3 rooms	S-W	65.90	80.09	1 350	108 122
F65	VI	studio	S	35.60	43.26	1 360	58 834
F66	VI	studio	S	35.60	43.26	1 360	58 834
F67	VI	3 rooms	S-E	65.80	79.97	1 350	107 960
F68	VI	studio	S-E	36.70	44.60	1 360	60 656
F69	VI	2 rooms	S-E	50.70	61.62	1 350	83 187
F70	VI	2 rooms	S-E	53.30	64.78	1 350	87 453
F71	VII	3 rooms	S-W	64.00	77.78	1 170	91 003
F72	VII	3 rooms	S-E	68.60	83.37	1 300	108 381
F73	VII	2 rooms	S	49.20	59.79	1 170	69 954



Mountain residence 7, Bansko

Ap. No	Floor	Type	View	Living Area (in sq.m.)	Total Area (in sq.m.)	Pice per sq.m. (Euro)	Total Price (Euro)
B69	III	2 rooms		46.88	56.83	400	22 732
A1	groundfloor	2 rooms		53.03	65.60	450	29 521
C1	groundfloor	4 rooms		102.25	119.47	450	53 761
A25	I	3 rooms		68.23	88.72	450	39 923
B4	groundfloor	3 rooms		79.02	92.03	450	41 414
C8	groundfloor	2 rooms		57.56	67.29	450	30 281



Forest Glade, Pamprovo

Ap. No	Floor	Type	View	Living Area (in sq.m.)	Total Area (in sq.m.)	Pice per sq.m. (Euro)	Total Price (Euro)
APT.3	I	2 rooms	mountains	51.90	69.26	700	48 500
APT.4	II	2 rooms	mountains	52.00	69.39	569	39 500
APT.5	II	studio	mountains	26.00	34.69	692	24 000
APT.6	II	2 rooms	mountains	51.90	69.26	570	39 500
APT.16	III	studio	mountains	26.00	34.69	879	30 500
APT.19	III	studio	mountains	42.20	56.31	1 193	67 200
APT.20	III	2 rooms	mountains	52.80	70.46	1 000	70 460
APT.21	III	2 rooms	mountains	66.90	89.27	900	80 343
APT.24	III	2 rooms	mountains	51.90	69.26	570	39 500
APT.28	IV	studio	mountains	26.00	34.69	749	26 000
APT.29	IV	2 rooms	mountains	51.90	69.26	744	51 500
APT.30	IV	2 rooms	mountains	51.90	69.26	744	51 500
APT.37	IV	studio	mountains	42.20	56.31	1 000	56 310
APT.39	IV	2 rooms	mountains	66.90	89.27	900	80 343
APT.45	V	2 rooms	mountains	52.00	69.39	757	52 500
APT.47	V	studio	mountains	26.00	34.69	922	32 000
APT.50	V	2 rooms	mountains	51.90	69.26	758	52 500
ATTIC.51	V	2 rooms	mountains	43.80	58.45	703	41 100
APT.52	V	studio	mountains	26.00	34.69	888	30 800
ATTIC.53	V	3 rooms	mountains	65.30	87.14	701	61 100
APT.56	V	studio	mountains	42.20	56.31	1 000	56 310
APT.58	V	2 rooms	mountains	66.90	89.27	900	80 343
ATTIC.69	VI	3 rooms	mountains	65.30	87.14	701	61 100
APT.70	VI	studio	mountains	26.00	34.69	917	31 800
APT.71	VI	2 rooms	mountains	51.90	69.26	772	53 500
APT.72	VI	studio	mountains	26.00	34.69	917	31 800
APT.73	VI	studio	mountains	26.00	34.69	917	31 800
APT.85	VII	studio	mountains	26.00	34.69	946	32 800
APT.86	VII	2 rooms	mountains	51.90	69.26	823	57 000
ATTIC.88	VII	3 rooms	mountains	65.30	87.14	701	61 100
ATTIC.97	VIII	3 rooms	mountains	65.30	87.14	701	61 100



Royal Pamporovo, Pamporovo

Ap. No	Floor	Type	View	Living Area (in sq.m.)	Total Area (in sq.m.)	Pice per sq.m. (Euro)	Total Price (Euro)
1	A1	2 rooms	N	35.47	43.37	1 150	49 876
1	A2	2 rooms	E	52.45	64.13	1 150	73 750
1	A3	3 rooms	NW	62.89	76.89	1 150	88 424
2	A4	2 rooms	N	38.08	46.56	1 180	54 941
2	A5	3 rooms	E	76.89	94.01	1 200	112 812
2	A6	3 rooms	NW	62.89	76.89	1 150	88 424
3	A7	2 rooms	N	38.08	46.56	1 200	55 872
3	A8	3 rooms	E	76.89	94.01	1 250	117 513
3	A9	3 rooms	NW	69.20	84.61	1 180	99 840
4	A10	2 rooms	N	38.08	46.56	1 200	55 872
4	A11	2 rooms	E	59.55	72.81	1 250	91 013
4	A12	3 rooms	NW	69.20	84.61	1 200	101 532
5	A13	2 rooms	N	38.08	46.56	1 220	56 803
5	A14	2 rooms	E	59.55	72.81	1 250	91 013
5	A15	2 rooms	E	51.91	63.47	1 250	79 338
5	A16	2 rooms	E	47.82	58.47	1 250	73 088
5	A17	2 rooms	SE	55.73	68.14	1 250	85 175
5	A18	3 rooms	NW	71.61	87.56	1 250	109 450
6	A19	2 rooms	N	38.08	46.56	1 250	58 200
6	A20	2 rooms	E	59.55	72.81	1 250	91 013
6	A21	2 rooms	E	51.91	63.47	1 250	79 338
6	A22	2 rooms	E	47.82	58.47	1 250	73 088
6	A23	2 rooms	SE	55.73	68.14	1 250	85 175
2	A24	3 rooms	SW	71.58	87.52	1 200	105 024
2	A25	2 rooms	W	41.38	50.59	1 200	60 708
2	A26	2 rooms	W	41.04	50.18	1 200	60 216
6	A27	3 rooms	NW	71.61	87.56	1 250	109 450
7	A28	2 rooms	N	38.08	46.56	1 250	58 200
7	A29	2 rooms	E	59.55	72.81	1 250	91 013
7	A30	2 rooms	E	51.91	63.47	1 250	79 338
7	A31	2 rooms	E	47.82	58.47	1 250	73 088
7	A32	2 rooms	SE	55.73	68.14	1 250	85 175
3	A33	3 rooms	SW	71.58	87.52	1 250	109 400
3	A34	2 rooms	W	41.38	50.59	1 250	63 238
3	A35	2 rooms	W	41.04	50.18	1 250	62 725
7	A36	3 rooms	NW	71.61	87.56	1 250	109 450
8	A37	2 rooms	N	50.50	61.75	1 250	77 188
8	A38	2 rooms	E	59.55	72.81	1 250	91 013
8	A39	2 rooms	E	51.91	63.47	1 250	79 338
8	A40	2 rooms	E	47.82	58.47	1 250	73 088
8	A41	2 rooms	SE	55.73	68.14	1 250	85 175
4	A42	3 rooms	SW	71.58	87.52	1 250	109 400
4	A43	2 rooms	W	41.38	50.59	1 250	63 238
4	A44	2 rooms	W	41.04	50.18	1 250	62 725
8	A45	3 rooms	NW	71.61	87.56	1 250	109 450

9	A46	2 rooms	N	50.50	61.75	1 250	77 188
9	A47	2 rooms	E	59.55	72.81	1 250	91 013
9	A48	2 rooms	E	51.91	63.47	1 250	79 338
9	A49	2 rooms	E	47.82	58.47	1 250	73 088
9	A50	2 rooms	SE	55.73	68.14	1 250	85 175
5	A51	3 rooms	SW	71.58	87.52	1 250	109 400
5	A52	2 rooms	W	41.38	50.59	1 250	63 238
5	A53	2 rooms	W	41.04	50.18	1 250	62 725
9	A54	studio	NW	31.90	39.00	1 150	44 850
10	A55	studio	NE	33.73	41.24	1 150	47 426
10	A56	studio	E	28.73	35.13	1 150	40 400
10	A57	studio	E	37.44	45.78	1 150	52 647
10	A58	2 rooms	E	38.77	47.40	1 150	54 510
10	A59	2 rooms	SE	60.86	74.41	1 150	85 572
6	A60	2 rooms	SW	49.95	61.07	1 150	70 231
6	A61	2 rooms	W	30.85	37.72	1 150	43 378
6	A62	studio	W	30.92	37.81	1 150	43 482
1	B1	studio	NW	66.65	74.55	1 150	85 733
1	B2	studio	NW	64.92	72.40	1 150	83 260
1	B3	0 rooms	NW	50.52	54.79	1 150	63 009
1	B4	studio	NW	63.41	70.55	1 150	81 133
1	B5	studio	NW	66.82	74.72	1 150	85 928
1	B6	studio	NEW	56.61	64.46	1 150	74 129
1	B7	studio	NES	54.38	63.63	1 150	73 175
1	B8	studio	SE	60.88	70.25	1 150	80 788
1	B9	studio	SE	60.88	70.25	1 150	80 788
1	B10	studio	SE	60.88	70.25	1 150	80 788
1	B11	studio	SE	60.88	70.25	1 150	80 788
1	B12	studio	SE	66.33	76.99	1 150	88 539
1	B13	studio	NW	38.71	47.33	1 150	54 430
2	B14	studio	NW	36.17	44.22	1 170	51 737
2	B15	0 rooms	NW	21.21	25.93	1 170	30 338
2	B16	studio	NW	34.66	42.38	1 170	49 585
2	B17	studio	NW	38.08	46.56	1 170	54 475
2	B18	studio	NEW	44.91	54.91	1 180	64 794
2	B19	2 rooms	NES	59.85	73.18	1 200	87 816
2	B20	studio	SE	51.97	63.54	1 200	76 248
2	B21	studio	SE	51.97	63.54	1 200	76 248
2	B22	studio	SE	51.97	63.54	1 200	76 248
2	B23	studio	SE	51.97	63.54	1 200	76 248
2	B24	studio	SE	54.55	66.70	1 200	80 040
2	B25	studio	NW	38.08	46.56	1 180	54 941
3	B26	studio	NW	36.17	44.22	1 180	52 180
3	B27	0 rooms	NW	21.21	25.93	1 180	30 597
3	B28	studio	NW	34.66	42.38	1 180	50 008
3	B29	studio	NW	38.08	46.56	1 180	54 941
3	B30	studio	NEW	44.91	54.91	1 220	66 990
3	B31	2 rooms	NES	59.85	73.18	1 250	91 475
3	B32	studio	SE	51.97	63.54	1 250	79 425
3	B33	studio	SE	51.97	63.54	1 250	79 425
3	B34	studio	SE	51.97	63.54	1 250	79 425
3	B35	studio	SE	51.97	63.54	1 250	79 425

3	B36	studio	SE	51.97	63.54	1 250	79 425
3	B37	studio	NW	38.08	46.56	1 210	56 338
4	B38	studio	NW	36.17	44.22	1 220	53 948
4	B39	0 rooms	NW	21.21	25.93	1 220	31 635
4	B40	studio	NW	34.66	42.38	1 220	51 704
4	B41	studio	NW	38.08	46.56	1 220	56 803
4	B42	studio	NEW	44.91	54.91	1 240	68 088
4	B43	2 rooms	NES	59.85	73.18	1 250	91 475
4	B44	studio	SE	51.97	63.54	1 250	79 425
4	B45	studio	SE	51.97	63.54	1 250	79 425
4	B46	studio	SE	51.97	63.54	1 250	79 425
4	B47	studio	SE	51.97	63.54	1 250	79 425
4	B48	studio	SE	51.97	63.54	1 250	79 425
4	B49	studio	NW	38.08	46.56	1 230	57 269
5	B50	studio	NW	36.17	44.22	1 230	54 391
5	B51	0 rooms	NW	21.21	25.93	1 230	31 894
5	B52	studio	NW	34.66	42.38	1 230	52 127
5	B53	studio	NW	38.08	46.56	1 230	57 269
5	B54	studio	NEW	44.91	54.91	1 240	68 088
5	B55	2 rooms	NES	59.85	73.18	1 250	91 475
5	B56	studio	SE	51.97	63.54	1 250	79 425
5	B57	studio	SE	51.97	63.54	1 250	79 425
5	B58	studio	SE	51.97	63.54	1 250	79 425
5	B59	studio	SE	51.97	63.54	1 250	79 425
5	B60	studio	SE	51.97	63.54	1 250	79 425
5	B61	studio	NW	38.08	46.56	1 230	57 269
6	B62	studio	NW	36.17	44.22	1 230	54 391
6	B63	0 rooms	NW	21.21	25.93	1 230	31 894
6	B64	studio	NW	34.66	42.38	1 230	52 127
6	B65	studio	NW	38.08	46.56	1 230	57 269
6	B66	studio	NEW	44.91	54.91	1 250	68 638
6	B67	2 rooms	NES	59.85	73.18	1 260	92 207
6	B68	studio	SE	51.97	63.54	1 260	80 060
6	B69	studio	SE	51.97	63.54	1 260	80 060
6	B70	studio	SE	51.97	63.54	1 260	80 060
6	B71	studio	SE	51.97	63.54	1 260	80 060
6	B72	studio	SE	51.97	63.54	1 260	80 060
6	B73	studio	NW	38.08	46.56	1 240	57 734
7	B74	studio	NW	36.17	44.22	1 240	54 833
7	B75	0 rooms	NW	21.21	25.93	1 240	32 153
7	B76	0 rooms	NW	24.50	29.96	1 150	34 454
7	B77	0 rooms	NW	24.58	30.05	1 150	34 558
7	B78	2 rooms	NEW	63.86	78.08	1 150	89 792
7	B79	studio	NES	39.10	47.81	1 150	54 982
7	B80	studio	SE	39.10	47.81	1 150	54 982
7	B81	studio	SE	51.97	63.54	1 260	80 060
7	B82	studio	SE	51.97	63.54	1 260	80 060
7	B83	studio	SE	51.97	63.54	1 260	80 060
7	B84	studio	NW	38.08	46.56	1 240	57 734
8	B85	studio	NW	36.17	44.22	1 240	54 833
8	B86	0 rooms	NW	21.21	25.93	1 240	32 153
8	B87	studio	SE	51.97	63.54	1 260	80 060

8	B88	studio	SE	51.97	63.54	1 260	80 060
8	B89	studio	SE	51.97	63.54	1 260	80 060
8	B90	0 rooms	NW	26.23	32.07	1 150	36 881
9	B91	0 rooms	NW	34.18	41.79	1 150	48 059
9	B92	0 rooms	SE	30.41	37.18	1 150	42 757
9	B93	studio	SE	40.75	49.82	1 150	57 293
9	B94	studio	SE	40.75	49.82	1 150	57 293



Paradiso Verde - Second Phase, Bansko

Ap. No	Floor	Type	View	Living Area (in sq.m.)	Total Area (in sq.m.)	Pice per sq.m. (Euro)	Total Price (Euro)
F37	IV	3 rooms		81.92	93.49	674	63 000
I12	I	studio		42.75	50.54	653	33 000



Lucky Bansko 1, Bansko

Ap. No	Floor	Type	View	Living Area (in sq.m.)	Total Area (in sq.m.)	Pice per sq.m. (Euro)	Total Price (Euro)
212_typ B7	I	2 rooms	South	70.40	82.98	900	74 682
216_typ A2	I	studio	South	35.20	41.49	900	37 341
306/308_typ A2	II	studio	South	35.20	41.49	930	38 586
306?/310_typ A2	II	studio	South	35.20	41.49	930	38 586
306_typ A2	II	studio	South	35.20	41.49	930	38 586
312_typ B7	II	2 rooms	South	70.40	82.98	930	77 171
316_typ A2	II	studio	South	35.20	41.49	930	38 586
320_typ B7	II	2 rooms	South	70.40	82.98	930	77 171
403_typ A2	III	studio	North	35.20	41.49	945	39 208
408_typ B7	III	2 rooms	South	70.40	82.98	970	80 491
501_typ B12	IV	2 rooms	North/East	84.58	99.71	1 050	104 696
504_typ B5	IV	2 rooms	East/South	70.40	82.99	1 050	87 140
506_typ B5	IV	2 rooms	East/South	70.40	82.99	1 050	87 140
507_typ C4	IV	3 rooms	North	93.89	110.68	1 025	113 447
508_typ B5	IV	2 rooms	South	70.40	82.99	1 070	88 799
509_typ B4	IV	2 rooms	North	59.69	70.19	1 025	71 945
511_typ A1	IV	studio	North	35.20	41.49	1 000	41 490
517_typ C2	IV	3 rooms	W?/N?/So	182.60	215.25	1 350	290 588



Lucky Bansko 2, Bansko

Ap. No	Floor	Type	View	Living Area (in sq.m.)	Total Area (in sq.m.)	Pice per sq.m. (Euro)	Total Price (Euro)
2201_typ A5	I	studio	South/East	44.21	52.06	830	43 210
2202_typ B8	I	2 rooms	West/South	64.00	75.36	830	62 549
2207_typ A5	I	studio	North/East	44.21	52.06	805	41 908
2301_typ A5	II	studio	East/South	44.21	52.06	860	44 772
2302_typ B8	II	2 rooms	West/South	64.00	75.36	860	64 810
2304_typ B8	II	2 rooms	North/West	64.00	75.36	835	62 926
2307_typ A5	II	studio	North/East	44.21	52.06	835	43 470
2401_typ A5	III	studio	East/South	44.21	52.06	900	46 854
2402_typ B8	III	2 rooms	West/South	64.00	75.36	900	67 824
2407_typ A5	III	studio	East/North	44.21	52.06	875	45 553
2501_typ C6	IV	3 rooms	South/East	82.16	96.74	970	93 838
2502_typ B9	IV	2 rooms	West/South	64.90	76.42	970	74 127
2503_typ C6	IV	3 rooms	East/North	82.16	96.74	945	91 419
2504_typ B9	IV	2 rooms	West/North	64.90	76.42	945	72 217



DETELINA RESIDENCE, Bansko

Ap. No	Floor	Type	View	Living Area (in sq.m.)	Total Area (in sq.m.)	Pice per sq.m. (Euro)	Total Price (Euro)
A1	groundfloor	2 rooms	mountains	59.16	72.12	620	44 713
A2	groundfloor	2 rooms	mountains	55.63	67.82	620	42 045
A5	groundfloor	2 rooms	mountains	55.64	67.83	620	42 053
A6	groundfloor	2 rooms	mountains	56.55	68.94	620	42 741
A7	groundfloor	2 rooms	mountains	58.52	71.34	620	44 230
A13	I	2 rooms	mountains	55.09	67.16	620	41 637
A14	I	2 rooms	mountains	56.55	68.94	620	42 741



Paradiso Verde - First Phase, Bansko

Ap. No	Floor	Type	View	Living Area (in sq.m.)	Total Area (in sq.m.)	Pice per sq.m. (Euro)	Total Price (Euro)
C7	groundfloor	studio		43.39	49.95	641	32 000
C14	I	studio		43.44	49.79	663	33 000
C17	I	studio		34.13	39.78	654	26 000
D4	groundfloor	2 rooms		54.29	63.28	648	41 000



FOUR SEASONS, Bansko

Ap. No	Floor	Type	View	Living Area (in sq.m.)	Total Area (in sq.m.)	Pice per sq.m. (Euro)	Total Price (Euro)
7	groundfloor	2 rooms	south	49.56	58.41	850	49 647
8	groundfloor	studio	north	37.82	44.57	850	37 886
9	groundfloor	studio	south	38.59	45.48	850	38 658
10	groundfloor	studio	east-north	40.37	47.58	850	40 441
101	I	3 rooms	south-west	61.57	72.56	900	65 306
102	I	3 rooms	south-east	67.57	79.63	900	71 670
103	I	studio	west	27.72	32.67	900	29 402
106	I	studio	west-north	37.50	44.19	900	39 775
110	I	2 rooms	south	53.41	62.95	900	56 651
114	I	studio	north	38.03	44.82	900	40 337
115	I	2 rooms	south	38.03	44.82	900	40 338
116	I	2 rooms	north	44.79	52.79	900	47 508
119	I	studio	north	35.41	41.73	900	37 559
120	I	studio	south	33.44	39.41	900	35 469
121	I	studio	north	29.64	34.93	900	31 439
125	I	studio	north	37.82	44.57	900	40 115
126	I	studio	south	38.59	45.48	900	40 932
128	I	studio	south-east	46.38	54.66	900	49 194
203	II	studio	west	27.72	32.67	930	30 382
204	II	studio	east	29.57	34.85	930	32 410
218	II	studio	north	44.79	52.79	930	49 091
221	II	studio	north	35.41	41.73	930	38 811
229	II	studio	north-east	40.37	47.58	930	44 247
306	III	studio	north-west	40.04	47.19	960	45 301
307	III	2 rooms	north-west	52.85	62.29	960	59 794
310	III	studio	north	56.18	66.21	960	63 562
312	III	studio	north	49.69	58.56	960	56 219
315	III	3 rooms	south-east	78.22	92.18	990	91 263
316	III	studio	north	43.97	51.82	960	49 747
319	III	studio	north	38.45	45.31	960	43 502
320	III	2 rooms	south	62.18	73.28	960	70 350
321	III	studio	north	30.66	36.13	960	34 688
322	III	studio	north	47.22	55.65	960	53 424
324	III	studio	north	37.80	44.55	960	42 767
326	III	studio	north-east	44.43	52.36	960	50 268
401	IV	studio	south-west	53.46	63.00	990	62 374
402	IV	studio	south-east	60.96	71.84	990	71 125
404	IV	studio	north-west	44.72	52.70	990	52 177
406	IV	studio	south	48.32	56.95	990	56 377



Sv. Ivan Rilski, Bansko

Ap. No	Floor	Type	View	Living Area (in sq.m.)	Total Area (in sq.m.)	Pice per sq.m. (Euro)	Total Price (Euro)
1A1	I	2 rooms	mountain landscape	75.31	108.54	1 035	112 291
1A2	I	2 rooms	mountain landscape	67.35	95.91	1 117	107 105
1A4	I	2 rooms	mountain landscape	68.80	99.16	1 026	101 749

1A5	II	2 rooms	mountain landscape	67.33	99.88	1 111	110 988
1A10	III	2 rooms	mountain landscape	67.33	99.88	1 123	112 172
1B1	I	2 rooms	mountain landscape	76.49	108.10	1 044	112 883
1B4	I	2 rooms	mountain landscape	67.63	95.31	1 033	98 432
1B5	II	2 rooms	mountain landscape	77.66	112.83	1 105	124 728
1B8	II	2 rooms	mountain landscape	59.52	85.16	1 187	101 062
1B10	III	2 rooms	mountain landscape	77.66	112.83	1 116	125 912
2A1	I	2 rooms	mountain landscape	75.31	108.54	1 015	110 159
2A2	I	2 rooms	mountain landscape	67.35	95.91	1 084	103 966
2A4	I	2 rooms	mountain landscape	68.80	99.16	1 006	99 735
2A5	II	2 rooms	mountain landscape	67.33	99.88	1 090	108 856
2A6	II	2 rooms	mountain landscape	59.52	87.17	1 164	101 430
2A10	III	2 rooms	mountain landscape	67.33	99.88	1 111	110 989
2A18	IV	studio	mountain landscape	43.91	62.27	1 202	74 847
2B2	I	2 rooms	mountain landscape	68.53	96.30	1 043	100 487
2B4	I	2 rooms	mountain landscape	67.63	95.31	1 013	96 517
2B5	II	2 rooms	mountain landscape	77.66	112.83	1 094	123 427
2B9	II	2 rooms	mountain landscape	59.64	86.38	1 090	94 168
3A1	I	2 rooms	mountain landscape	70.55	100.18	1 098	110 032
3A2	I	2 rooms	mountain landscape	66.88	93.86	1 160	108 836
3A4	I	2 rooms	mountain landscape	68.53	96.18	1 112	106 985
3A5	I	2 rooms	mountain landscape	69.00	97.98	1 042	102 138
3A6	II	2 rooms	mountain landscape	72.15	105.35	1 140	120 146
3A7	II	2 rooms	mountain landscape	68.09	98.19	1 193	117 128
3A8	II	studio	mountain landscape	47.64	68.70	1 162	79 816
3A11	III	2 rooms	mountain landscape	72.15	105.35	1 163	122 561
3A13	III	studio	mountain landscape	47.64	68.70	1 184	81 375
3B1	I	2 rooms	mountain landscape	79.91	113.14	1 050	118 763
3B2	I	2 rooms	mountain landscape	76.24	107.33	1 032	110 729
3B3	I	studio	mountain landscape	38.98	54.40	1 108	60 291
3B4	I	2 rooms	mountain landscape	68.53	95.64	1 084	103 644
3B5	I	2 rooms	mountain landscape	69.00	97.41	1 035	100 823
3B6	II	2 rooms	mountain landscape	80.30	116.89	1 094	127 852
3B7	II	2 rooms	mountain landscape	76.24	110.30	1 127	124 254
3B8	II	studio	mountain landscape	47.64	68.29	1 131	77 229
3B9	II	2 rooms	mountain landscape	59.52	85.32	1 173	100 105
3B15	III	2 rooms	mountain landscape	59.67	86.59	1 155	99 981
4B1	I	2 rooms	mountain landscape	79.91	113.14	1 019	115 294
4B2	I	2 rooms	mountain landscape	76.24	107.33	1 069	114 778
4B3	I	studio	mountain landscape	38.98	54.40	1 087	59 107
4B4	I	2 rooms	mountain landscape	68.53	95.64	1 063	101 630
4B8	II	studio	mountain landscape	47.64	68.29	1 119	76 424
4B9	II	2 rooms	mountain landscape	59.52	85.32	1 149	98 072



Forest Nook 3 phase 2, Pamporovo

Ap. No	Floor	Type	View	Living Area (in sq.m.)	Total Area (in sq.m.)	Pice per sq.m. (Euro)	Total Price (Euro)
--------	-------	------	------	------------------------	-----------------------	-----------------------	--------------------

B2	-II	2 rooms	mountains	64.97	51.90	867	45 000
A4	-II	studio	mountains	32.42	25.90	1 069	27 680
B1	-I	2 rooms	mountains	69.46	55.90	1 175	65 700
B4	-I	2 rooms	mountains	64.49	51.90	1 068	55 430
C1	-I	3 rooms	mountains	121.65	97.90	1 053	103 130
B5	-I	2 rooms	mountains	64.49	51.90	1 085	56 330
A3	-I	studio	mountains	37.28	30.00	1 181	35 416
B1	groundfloor	2 rooms	mountains	64.49	51.90	1 123	58 265
B2	groundfloor	2 rooms	mountains	65.61	52.80	1 124	59 329
B3	groundfloor	2 rooms	mountains	69.46	55.90	1 230	68 765
B7	groundfloor	2 rooms	mountains	64.49	51.90	1 172	60 845
A6	groundfloor	studio	mountains	37.28	30.00	1 265	37 950
B1	I	2 rooms	mountains	64.49	51.90	1 037	53 800
B2	I	2 rooms	mountains	60.14	48.40	1 134	54 900
B3	I	2 rooms	mountains	59.15	47.60	1 230	58 555
B4	I	2 rooms	mountains	64.49	51.90	1 136	58 980
B5	I	2 rooms	mountains	65.61	52.80	1 349	71 231
A1	I	studio	mountains	36.66	29.50	1 349	39 800
C3	I	3 rooms	mountains	121.65	97.90	1 367	133 815
C2	I	2 rooms	mountains	92.57	74.50	1 180	87 941
A5	I	studio	mountains	37.28	30.00	1 234	37 008
A7	I	studio	mountains	38.64	31.10	1 077	33 500
A8	I	studio	mountains	37.28	30.00	1 117	33 500
B13	I	2 rooms	mountains	64.49	51.90	1 321	68 550
B5	II	2 rooms	mountains	65.61	52.80	1 186	62 610
B10	II	2 rooms	mountains	64.49	51.90	1 243	64 490
A3	II	studio	mountains	37.28	30.00	1 243	37 280
A5	II	studio	mountains	37.28	30.00	1 367	41 008
A7	II	studio	mountains	38.64	31.10	1 157	35 980
A8	II	studio	mountains	37.28	30.00	1 166	34 980
A2	III	studio	mountains	35.54	28.60	1 243	35 540
B3	III	2 rooms	mountains	60.14	48.40	1 230	59 538
B5	III	2 rooms	mountains	64.49	51.90	1 230	63 845
A7	III	studio	mountains	36.66	29.50	1 281	37 800
A8	III	studio	mountains	36.66	29.50	1 281	37 800
B16	III	2 rooms	mountains	64.49	51.90	1 180	61 265
A1	IV	studio	mountains	36.66	29.50	1 243	36 660
A2	IV	studio	mountains	35.54	28.60	1 243	35 540
B3	IV	2 rooms	mountains	60.14	48.40	1 239	59 950
B8	IV	2 rooms	mountains	64.97	51.90	1 252	64 970
B9	IV	2 rooms	mountains	66.10	52.80	1 252	66 100
M3	IV	2 rooms	mountains	91.17	82.50	606	49 980
M5	IV	2 rooms	mountains	91.17	82.50	606	49 980
M6	IV	3 rooms	mountains	108.18	97.90	1 040	101 800
A2	V	studio	mountains	35.54	28.60	1 243	35 540
B3	V	2 rooms	mountains	60.14	48.40	1 353	65 500
B5	VI	2 rooms	mountains	64.97	51.90	1 374	71 335
B6	VI	2 rooms	mountains	60.59	48.40	1 377	66 649
B9	VI	2 rooms	mountains	76.74	61.30	1 207	73 990
B1	VII	2 rooms	mountains	60.34	48.20	1 037	49 990



Solomonina, Pamporovo

Ap. No	Floor	Type	View	Living Area (in sq.m.)	Total Area (in sq.m.)	Pice per sq.m. (Euro)	Total Price (Euro)
1_B1	-I	2 rooms	SW / NW	71.13	82.67	742	61 316
2_B1	-I	2 rooms	SW	70.31	81.48	742	60 430
3_B1	groundfloor	2 rooms	SW / NW	56.62	65.47	845	55 301
4_B1	groundfloor	3 rooms	SW / NW	77.46	89.11	845	75 262
5_B1	groundfloor	2 rooms	SW	57.44	66.29	845	55 991
6_B1	groundfloor	2 rooms	S	66.07	76.84	845	64 900
7_B1	groundfloor	2 rooms	S	66.07	75.94	845	64 139
8_B1	I	2 rooms	NW	62.14	71.47	937	66 991
9_B1	I	2 rooms	SW / NW	68.90	79.02	958	75 705
10_B1	I	2 rooms	SW	59.43	68.82	958	65 923
11_B1	I	2 rooms	S	62.51	72.01	958	69 010
12_B1	I	2 rooms	S	62.51	72.07	958	69 041
13_B1	I	2 rooms	S	59.45	68.49	958	65 611
14_B1	I	3 rooms	SE	77.49	89.54	958	85 770
15_B1	I	2 rooms	E	48.42	56.28	937	52 751
16_B1	II	2 rooms	NW	66.82	77.49	937	72 631
17_B1	II	2 rooms	SW / NW	69.10	80.00	958	76 632
18_B1	II	2 rooms	SW	60.34	69.88	958	66 950
19_B1	II	2 rooms	S	56.54	66.04	958	63 263
20_B1	II	2 rooms	S	56.54	65.81	958	63 036
21_B1	II	2 rooms	S	60.33	69.88	958	66 940
22_B1	II	3 rooms	SE	76.96	89.17	958	85 418
23_B1	II	2 rooms	E	56.02	65.25	937	61 161
24_B1	III	2 rooms	SW / NW	65.89	76.20	937	71 422
27_B1	III	2 rooms	SE	67.55	78.19	948	74 093
28_B1	III	2 rooms	SE	60.88	70.72	948	67 015
29_B1	III	2 rooms	E	63.86	72.40	937	67 861
31_B1	IV	2 rooms	E	51.23	63.63	886	56 364
1_B2	I	2 rooms	E	58.11	66.07	922	60 907
2_B2	I	2 rooms	NW	61.79	70.25	937	65 848
3_B2	I	2 rooms	W	45.13	51.31	937	48 093
6_B2	I	2 rooms	SW	45.13	51.31	937	48 093
7_B2	I	2 rooms	E / SW	61.79	70.25	937	65 848
8_B2	I	2 rooms	E	58.11	66.07	937	61 929
9_B2	II	2 rooms	E	57.47	65.34	927	60 570
10_B2	II	2 rooms	NW	66.83	75.98	937	71 216
11_B2	II	2 rooms	W	46.93	53.36	937	50 015
15_B2	II	2 rooms	E / SW	66.83	75.98	937	71 216
16_B2	II	2 rooms	E	60.59	68.89	927	63 860
17_B2	III	2 rooms	E	58.47	66.48	927	61 627
18_B2	III	2 rooms	NW	61.73	70.18	937	65 781
19_B2	III	studio	W	39.76	45.21	937	42 375
20a_B2	III	studio	W	29.64	33.70	989	33 323
20b_B2	III	studio	W	29.64	33.70	989	33 323
21a_B2	III	studio	W	29.64	33.70	989	33 323
21b_B2	III	studio	W	29.64	33.70	989	33 323

22_B2	III	studio	SW	39.76	45.21	937	42 375
23_B2	III	2 rooms	E / SW	61.73	70.18	937	65 780
24_B2	III	2 rooms	E	61.57	70.00	927	64 890
25_B2	IV	studio	E	58.47	66.48	886	58 888
26_B2	IV	studio	W	44.36	50.44	886	44 681
27_B2	IV	studio	W	62.67	71.25	886	63 113
28_B2	IV	studio	SW	44.36	50.44	886	44 681
1_B3	groundfloor	2 rooms	E / SW	79.73	91.92	896	82 369
2_B3	I	studio	E / NW	55.28	63.73	937	59 735
4_B3	II	2 rooms	E / NW	80.27	92.54	937	86 738
6_B3	III	3 rooms	E / NW	85.10	98.11	937	91 958
7_B3	III	3 rooms	W / SE	73.41	84.63	937	79 325
8_B3	IV	studio	E / NW	48.68	56.12	937	52 602



3 Mountains, Bansko

Ap. No	Floor	Type	View	Living Area (in sq.m.)	Total Area (in sq.m.)	Pice per sq.m. (Euro)	Total Price (Euro)
1H12	groundfloor	2 rooms	mountain landscape	47.15	50.85	1 030	52 375
1H13	groundfloor	2 rooms	mountain landscape	47.15	50.85	1 030	52 375
1H14	groundfloor	2 rooms	mountain landscape	54.90	59.67	1 030	61 459
1H21	I	2 rooms	mountain landscape	68.00	74.71	1 030	76 950
1H22	I	3 rooms	mountain landscape	80.18	88.09	1 030	90 733
1H23	I	2 rooms	mountain landscape	68.00	74.71	1 030	76 950
1H32	II	2 rooms	mountain landscape	80.18	88.09	1 030	90 733
1H33	II	2 rooms	mountain landscape	68.00	74.71	1 030	76 950
1H42	III	2 rooms	mountain landscape	77.70	85.37	1 030	87 927
1H43	III	2 rooms	mountain landscape	60.46	66.42	1 030	68 418
2H11	groundfloor	2 rooms	mountain landscape	54.90	59.67	1 030	61 459
2H12	groundfloor	2 rooms	mountain landscape	47.15	50.85	1 030	52 375
2H13	groundfloor	2 rooms	mountain landscape	47.15	50.85	1 030	52 375
2H14	groundfloor	2 rooms	mountain landscape	54.90	59.67	1 030	61 459
2H21	I	2 rooms	mountain landscape	68.00	74.71	1 030	76 950
2H22	I	3 rooms	mountain landscape	80.18	88.09	1 030	90 733
2H23	I	2 rooms	mountain landscape	68.00	74.71	1 030	76 950
2H31	II	2 rooms	mountain landscape	68.00	74.71	1 030	76 950
2H32	II	3 rooms	mountain landscape	80.18	88.09	1 030	90 733
2H33	II	2 rooms	mountain landscape	68.00	74.71	1 030	76 950
2H41	III	2 rooms	mountain landscape	60.46	66.42	1 030	68 418
2H42	III	2 rooms	mountain landscape	70.70	85.37	1 030	87 927
2H43	III	2 rooms	mountain landscape	60.46	66.42	1 030	68 418



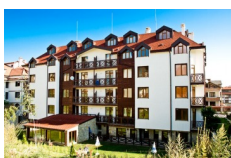
Nevina 2, Bansko

Ap. No	Floor	Type	View	Living Area (in sq.m.)	Total Area (in sq.m.)	Pice per sq.m. (Euro)	Total Price (Euro)
A36	IV	studio	west	41.89	46.69	1 068	49 887
A13	I	studio	east	38.14	42.97	1 168	50 199
A21	II	studio	east	38.14	42.97	1 168	50 199
A3	groundfloor	studio	west	40.26	45.16	1 127	50 911
A10	I	studio	west	41.47	46.52	1 127	52 445
A29	III	studio	east	41.59	46.86	1 168	54 740
A9	groundfloor	2 rooms	east	44.77	50.22	1 127	56 615
A35	IV	2 rooms	east	46.93	52.53	1 107	58 170
A17	I	2 rooms	west	54.85	61.52	1 127	69 361
A31	III	2 rooms	east	56.14	62.84	1 107	69 586
A6	groundfloor	2 rooms	east	53.43	60.20	1 168	70 323
A32	III	2 rooms	west	59.65	66.49	1 068	71 037
A8	groundfloor	2 rooms	west	60.70	68.09	1 127	76 759
A16	I	2 rooms	west	64.18	71.99	1 127	81 160
A24	II	2 rooms	west	64.18	71.99	1 127	81 160
A7	groundfloor	2 rooms	east	63.24	71.25	1 168	83 235
A15	I	2 rooms	east	64.05	72.16	1 168	84 301
A23	II	2 rooms	east	64.05	72.16	1 168	84 301
A30	III	3 rooms	east	82.22	92.03	1 107	101 912
A4	groundfloor	3 rooms	west	84.62	94.92	1 127	107 007
A34	IV	3 rooms	west	93.05	103.71	1 068	110 813
A5	groundfloor	3 rooms	east	84.46	95.16	1 168	111 164
A11	I	3 rooms	west	89.97	100.92	1 127	113 773
A12	I	3 rooms	east	89.21	100.51	1 168	117 416
A20	II	3 rooms	east	89.21	100.51	1 168	117 416
A14	I	3 rooms	east	92.20	103.88	1 168	121 352
A22	II	3 rooms	east	92.20	103.88	1 168	121 352



Rodopi Pearl, Pamprovo

Ap. No	Floor	Type	View	Living Area (in sq.m.)	Total Area (in sq.m.)	Pice per sq.m. (Euro)	Total Price (Euro)
10A	III	2 rooms	Snezhanka Peak / ski runs	85.30	87.91	920	80 877
13A	IV	3 rooms	Snezhanka Peak / ski runs	108.39	112.41	863	97 010
17A	V	2 rooms	Snezhanka Peak / ski runs	83.23	86.94	863	75 029
2B	II	3 rooms	Snezhanka Peak / ski runs	112.54	118.97	920	109 452
9B	IV	2 rooms	Snezhanka Peak / ski runs	73.32	76.07	863	65 648
18B	VII	3 rooms	Snezhanka Peak / ski runs	130.56	156.28	863	134 869
3C	II	3 rooms	Snezhanka Peak / ski runs	132.90	141.93	863	122 485
9C	IV	3 rooms	Snezhanka Peak / ski runs	132.90	141.93	863	122 486
12C	VI	4 rooms	Snezhanka Peak / ski runs	234.94	267.57	805	215 394



Mountain Castle 1, Bansko

Ap. No	Floor	Type	View	Living Area (in sq.m.)	Total Area (in sq.m.)	Pice per sq.m. (Euro)	Total Price (Euro)
ap 1	groundfloor	2 rooms	areas	29.74	34.99	950	33 240
ap 4	groundfloor	2 rooms	areas	28.31	33.30	950	31 635
ap 5	groundfloor	2 rooms	areas	30.79	36.22	950	34 409
st 2	I	studio	areas	27.06	31.84	950	30 248
ap 6	I	2 rooms	areas	43.67	51.38	950	48 811
ap 7	I	2 rooms	areas	64.80	76.23	950	72 418
ap 9	I	2 rooms	areas	44.41	52.25	950	49 637
ap 10	I	2 rooms	areas	64.80	76.23	850	64 795
ap 13	II	2 rooms	areas	64.80	76.23	950	72 418
ap 14	II	2 rooms	areas	44.41	52.25	950	49 637
ap 16	II	2 rooms	areas	64.80	76.23	950	72 418
ap 17	II	2 rooms	areas	43.67	51.38	850	43 673
ap 19	III	2 rooms	areas	64.80	76.23	950	72 418
ap 22	III	2 rooms	areas	64.80	76.23	950	72 418
ap 23	III	2 rooms	areas	43.67	51.38	950	48 811
st 13	IV	studio	areas	42.98	50.56	950	48 032
st 14	IV	studio	areas	61.81	72.72	950	69 084
st 15	IV	studio	areas	66.65	78.41	950	74 490
st 17	IV	studio	areas	75.71	89.07	950	84 616
st 18	IV	studio	areas	66.65	78.41	950	74 490
st 19	IV	studio	areas	61.81	72.72	950	69 084
st 21	V	studio	areas	60.60	71.29	950	67 725
st 22	V	studio	areas	60.60	71.29	950	67 725



Aston Villas, Bansko

Ap. No	Floor	Type	View	Living Area (in sq.m.)	Total Area (in sq.m.)	Pice per sq.m. (Euro)	Total Price (Euro)
1-04A	groundfloor	2 rooms	mountains	51.33	60.39	1 350	81 527
2-03A	I	2 rooms	mountains	48.89	57.52	1 287	74 000
2-06B	I	3 rooms	mountains	71.92	84.61	1 450	122 685
2-10A	I	2 rooms	mountains	49.94	58.75	1 450	85 188
2-10S	I	studio	mountains	23.61	27.78	1 450	40 281
2-12A	I	2 rooms	mountains	50.08	58.92	1 450	85 434
3-01A	II	2 rooms	mountains	48.50	57.06	1 450	82 737
3-07A	II	2 rooms	mountains	48.63	57.21	1 450	82 955
3-06B	II	3 rooms	mountains	71.92	84.61	1 500	126 915
3-08S	II	studio	mountains	32.54	38.28	1 450	55 506
3-10A	II	2 rooms	mountains	49.94	58.75	1 500	88 125
3-10S	II	studio	mountains	23.61	27.78	1 500	41 670
4-01A	III	2 rooms	mountains	48.50	57.06	1 500	85 590
4-02S	III	studio	mountains	31.81	37.42	1 500	56 130
4-05S	III	studio	mountains	27.17	31.97	1 550	49 554
4-08S	III	studio	mountains	32.54	38.28	1 500	57 420
4-11S	III	studio	mountains	27.83	32.74	1 550	50 747
5-04A	IV	2 rooms	mountains	69.81	82.13	1 174	96 416
5-06S	IV	studio	mountains	35.97	42.32	1 200	50 784



Adeona Residence, Bansko

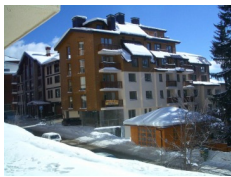
Ap. No	Floor	Type	View	Living Area (in sq.m.)	Total Area (in sq.m.)	Pice per sq.m. (Euro)	Total Price (Euro)
3a	I	2 rooms	garden	58.30	68.73	650	44 674
11a	II	2 rooms	garden	57.99	68.36	650	44 437
16a	II	2 rooms	garden	53.36	62.91	650	40 889
17a	II	2 rooms	garden	50.28	59.28	650	38 529
30a	IV	2 rooms	garden	58.68	69.18	650	44 966
31a	IV	2 rooms	garden	71.49	84.28	650	54 782
34a	IV	2 rooms	garden	46.70	55.05	650	35 786
36a	IV	2 rooms	garden	62.24	73.37	650	47 694
37a	IV	2 rooms	garden	50.59	59.64	650	38 766
1b	I	2 rooms	garden	57.24	67.48	650	43 862
2b	I	2 rooms	garden	53.97	63.63	650	41 356
1c	I	2 rooms	garden	53.97	63.63	650	41 356
2c	I	2 rooms	garden	53.97	63.63	650	41 356



Iceberg, Borovets

Ap. No	Floor	Type	View	Living Area (in sq.m.)	Total Area (in sq.m.)	Pice per sq.m. (Euro)	Total Price (Euro)
6	II	studio	alley	47.35	59.94	1 800	107 892
7	II	2 rooms	alley	81.65	103.36	1 800	186 048
9	II	studio	mountains	55.88	70.08	1 800	126 144
10	II	3 rooms	mountains	123.95	155.45	1 800	279 810
11	II	studio	mountains	56.09	70.34	1 800	126 612
12	II	2 rooms	alley	65.85	82.58	1 800	148 644
13	II	2 rooms	alley	100.92	127.76	1 800	229 968
14	II	studio	alley	53.11	67.23	1 800	121 014
15	II	studio	alley	32.89	41.25	1 400	57 750
16	II	studio	mountains	32.75	41.07	1 400	57 498
19	II	studio	alley	30.15	37.81	1 400	52 934
28	III	2 rooms	alley	66.95	83.96	1 800	151 128
29	III	2 rooms	alley	65.48	82.12	1 800	147 816
34	III	2 rooms	alley	67.32	84.43	1 800	151 974
39	III	studio	mountains	30.15	37.81	1 500	56 715
43	IV	studio	mountains	33.49	42.00	1 600	67 200
50	IV	2 rooms	alley	65.48	82.12	1 900	156 028
51	IV	studio	alley	47.71	59.83	1 900	113 677
52	IV	3 rooms	alley	101.70	127.54	1 900	242 326
53	IV	studio	alley	47.49	59.56	1 900	113 164
54	IV	2 rooms	alley	65.85	82.58	1 900	156 902
57	IV	studio	alley	32.89	41.25	1 600	66 000
58	IV	studio	mountains	32.75	41.07	1 600	65 712
59	IV	studio	mountains	32.75	41.07	1 600	65 712

61	IV	studio	mountains	30.15	37.81	1 600	60 496
63	IV	studio	mountains	33.95	42.58	1 600	68 128
64	V	studio	alley	33.64	42.19	1 700	71 723
68	V	2 rooms	alley	64.70	81.14	1 700	137 938
69	V	2 rooms	alley	66.95	83.96	2 000	167 920
71	V	studio	alley	41.71	52.31	2 000	104 620
73	V	studio	alley	47.49	59.56	2 000	119 120
75	V	3 rooms	alley	124.34	156.23	1 800	281 214
76	V	studio	alley	32.89	41.25	1 700	70 125
77	V	studio	alley	32.75	41.07	1 700	69 819
80	V	studio	alley	30.15	37.81	1 700	64 277
81	V	studio	alley	32.74	41.06	1 700	69 802
82	V	studio	alley	33.95	42.58	1 700	72 386



Mountain Lodge, Pamprovo

Ap. No	Floor	Type	View	Living Area (in sq.m.)	Total Area (in sq.m.)	Pice per sq.m. (Euro)	Total Price (Euro)
47	-VI	studio	mountains	37.63	48.44	660	31 970
48	-VI	studio	mountains	32.78	42.19	660	27 845
49	-V	studio	mountains	49.58	63.82	600	38 292
1	-V	2 rooms	complex	41.43	53.00	660	34 980
3	-V	2 rooms	mountains	54.26	69.84	750	52 380
4	-IV	2 rooms	mountains	44.43	57.19	600	34 314
5	-IV	2 rooms	mountains	49.50	63.72	750	47 790
6	-IV	2 rooms	mountains	54.30	69.90	750	52 425
50	-IV	studio	mountains	48.90	62.94	600	37 764
8	-III	2 rooms	mountains	49.50	63.72	750	47 790
9	-III	2 rooms	mountains	54.30	69.90	750	52 425
10	-III	2 rooms	mountains	50.08	64.46	630	40 610
17	-I	2 rooms	mountains	57.85	74.46	750	55 845
18	-I	2 rooms	ski slope	52.33	67.36	750	50 520
19	groundfloor	2 rooms	ski slope	44.43	57.19	750	42 893
22	groundfloor	2 rooms	ski slope	52.33	67.36	750	50 520
23	I	2 rooms	mountains	45.10	58.05	750	43 538
26	I	2 rooms	ski slope	52.33	67.36	750	50 520
27	I	2 rooms	ski slope	50.15	64.55	750	48 413
28	I	2 rooms	ski slope	48.98	63.05	750	47 288
29	I	2 rooms	complex	50.50	65.00	750	48 750
30	I	2 rooms	complex	49.87	64.19	650	41 724
33	II	2 rooms	ski slope	50.15	64.55	750	48 413
34	II	2 rooms	ski slope	48.98	63.05	750	47 288
35	II	2 rooms	complex	50.50	65.00	750	48 750
36	II	2 rooms	complex	49.87	64.19	650	41 724
43	IV	2 rooms	ski slope	65.13	79.87	750	59 903
44	IV	2 rooms	ski slope	66.83	82.58	750	61 935
45	IV	2 rooms	complex	65.74	81.92	750	61 440

46	IV	2 rooms	mountains	86.52	107.04	750	80 280
----	----	---------	-----------	-------	--------	-----	--------



Bansko Heights, Bansko

Ap. No	Floor	Type	View	Living Area (in sq.m.)	Total Area (in sq.m.)	Pice per sq.m. (Euro)	Total Price (Euro)
1	groundfloor	studio	mountains/wood	49.10	61.87	600	37 122
4	groundfloor	studio	mountains/wood	30.33	38.22	600	22 932
5	groundfloor	studio	mountains/wood	30.22	38.21	600	22 926
6	groundfloor	studio	mountains/wood	30.33	38.22	600	22 932
7	groundfloor	studio	mountains/wood	30.32	38.21	650	24 837
8	groundfloor	studio	mountains/wood	30.33	38.22	650	24 843
9	groundfloor	studio	mountains/wood	30.33	38.22	650	24 843
10	groundfloor	studio	mountains/wood	30.33	38.22	650	24 843
12	groundfloor	studio	mountains/wood	30.33	38.22	650	24 843
12-a	groundfloor	2 rooms	mountains/wood	49.74	62.68	650	40 742
12-b	groundfloor	2 rooms	mountains/wood	48.48	61.09	650	39 709
5-a	groundfloor	studio	mountains/wood	34.47	43.44	600	26 064
6-a	groundfloor	studio	mountains/wood	34.47	43.44	600	26 064
7-a	groundfloor	studio	mountains/wood	35.41	43.36	600	26 016
8-a	groundfloor	studio	mountains/wood	30.66	38.64	600	23 184
13	groundfloor	2 rooms	mountains/wood	48.95	61.64	700	43 148
14	groundfloor	studio	mountains/wood	30.33	38.19	700	26 733
15	groundfloor	studio	mountains/wood	30.32	38.18	700	26 726
16	groundfloor	studio	mountains/wood	30.33	38.19	700	26 733
17	groundfloor	studio	mountains/wood	30.32	38.18	700	26 726
18	groundfloor	studio	mountains/wood	30.33	38.19	700	26 733
19	groundfloor	studio	mountains/wood	30.32	38.18	700	26 726
22	groundfloor	studio	mountains/wood	30.15	37.96	700	26 572
23	groundfloor	studio	mountains/wood	30.15	37.96	700	26 572
24	groundfloor	studio	mountains/wood	30.15	37.96	700	26 572
25	groundfloor	studio	mountains/wood	30.15	37.96	700	26 572
26	groundfloor	2 rooms	mountains/wood	48.46	61.02	750	45 765
27	groundfloor	2 rooms	mountains/wood	49.74	62.63	750	46 973
28	groundfloor	studio	mountains/wood	30.15	37.96	750	28 470
29	groundfloor	studio	mountains/wood	30.15	37.96	750	28 470
30	groundfloor	studio	mountains/wood	30.15	37.96	750	28 470
33	groundfloor	studio	mountains/wood	30.15	37.96	750	28 470
34	I	2 rooms	mountains/wood	54.81	69.02	800	55 216
35	I	studio	mountains/wood	30.33	38.19	800	30 552
36	I	studio	mountains/wood	30.33	38.19	800	30 552
37	I	studio	mountains/wood	30.33	38.19	800	30 552
38	I	studio	mountains/wood	30.33	38.19	800	30 552
40	I	studio	mountains/wood	30.33	38.19	800	30 552
43	I	2 rooms	mountains/wood	61.25	77.12	800	61 696
44	I	2 rooms	mountains/wood	71.50	90.03	800	72 024
46	I	studio	mountains/wood	30.33	38.19	800	30 552
47	I	studio	mountains/wood	30.33	39.18	800	31 344

48	I	studio	mountains/wood	30.33	38.19	800	30 552
49	I	studio	mountains/wood	30.33	38.19	800	30 552
50	I	2 rooms	mountains/wood	56.44	71.07	800	56 856
51	I	2 rooms	mountains/wood	49.65	62.52	800	50 016
52	I	studio	mountains/wood	30.33	38.19	800	30 552
53	I	studio	mountains/wood	30.33	38.19	800	30 552
54	I	studio	mountains/wood	30.33	38.19	800	30 552
55	I	studio	mountains/wood	30.30	38.15	800	30 520
56	I	studio	mountains/wood	30.35	38.22	800	30 576
57	I	studio	mountains/wood	30.33	38.19	800	30 552
58	II	2 rooms	mountains/wood	55.53	69.92	850	59 432
59	II	studio	mountains/wood	30.33	38.19	850	32 462
61	II	studio	mountains/wood	30.33	38.19	850	32 462
68	II	3 rooms	mountains/wood	71.50	90.03	850	76 526
69	II	2 rooms	mountains/wood	59.54	74.97	850	63 725
70	II	studio	mountains/wood	30.50	38.40	850	32 640
71	II	studio	mountains/wood	30.50	38.40	850	32 640
73	II	studio	mountains/wood	30.50	38.40	850	32 640
74	II	2 rooms	mountains/wood	56.44	71.07	850	60 410
76	II	studio	mountains/wood	30.33	38.19	850	32 462
77	II	studio	mountains/wood	30.33	38.19	850	32 462
78	II	studio	mountains/wood	30.33	38.19	850	32 462
80	II	studio	mountains/wood	30.33	38.19	850	32 462
84	III	2 rooms	mountains/wood	61.01	76.65	900	68 985
85	III	2 rooms	mountains/wood	61.01	76.65	900	68 985
87	III	2 rooms	mountains/wood	61.20	76.88	900	69 192
88	III	2 rooms	mountains/wood	61.20	75.68	900	68 112
89	III	studio	mountains/wood	35.94	44.44	900	39 996
90	III	2 rooms	mountains/wood	59.47	73.54	900	66 186
92	III	2 rooms	mountains/wood	68.97	85.29	900	76 761
93	III	studio	mountains/wood	30.50	37.72	900	33 948
95	III	studio	mountains/wood	30.50	37.72	900	33 948
96	III	studio	mountains/wood	30.50	37.72	900	33 948
97	III	studio	mountains/wood	30.50	37.72	900	33 948



Pirin Hills Golf & SPA, Bansko

Ap. No	Floor	Type	View	Living Area (in sq.m.)	Total Area (in sq.m.)	Pice per sq.m. (Euro)	Total Price (Euro)
A 201	I	2 rooms	Mountains	55.89	67.63	1 680	113 613
A 202	I	studio	Mountains	23.40	28.31	1 680	47 568
A 203	I	studio	Mountains	27.85	33.70	1 680	56 613
A 204	I	studio	Mountains	27.85	33.70	1 680	56 613
A 205	I	studio	Mountains	30.06	36.37	1 680	61 106
A 206	I	studio	Mountains	33.30	40.29	1 680	67 692
A 207	I	studio	Mountains	32.88	39.78	1 680	66 838
A 208	I	studio	Mountains	32.88	39.78	1 680	66 838
A 209	I	2 rooms	Mountains	53.88	65.19	1 680	109 527

A 301	II	2 rooms	Mountains	55.89	67.63	1 680	113 613
A 302	II	studio	Mountains	23.40	28.31	1 680	47 568
A 303	II	studio	Mountains	27.85	33.70	1 680	56 613
A 304	II	studio	Mountains	27.85	33.70	1 680	56 613
A 305	II	studio	Mountains	30.06	36.37	1 680	61 106
A 306	II	studio	Mountains	33.30	40.29	1 680	67 692
A 307	II	studio	Mountains	32.88	39.78	1 680	66 838
A 308	II	studio	Mountains	32.88	39.78	1 680	66 838
A 309	II	2 rooms	Mountains	53.88	65.19	1 680	109 527
A 401	III	2 rooms	Mountains	55.89	67.63	1 680	113 613
A 402	III	studio	Mountains	23.40	28.31	1 680	47 568
A 403	III	studio	Mountains	27.85	33.70	1 680	56 613
A 404	III	studio	Mountains	27.85	33.70	1 680	56 613
A 405	III	studio	Mountains	30.06	36.37	1 680	61 106
A 406	III	studio	Mountains	33.30	40.29	1 680	67 692
A 407	III	studio	Mountains	32.88	39.78	1 680	66 838
A 409	III	2 rooms	Mountains	53.88	65.19	1 680	109 527
A 501	IV	2 rooms	Mountains	55.89	67.63	1 680	113 613
A 502	IV	studio	Mountains	23.40	28.31	1 680	47 568
A 503	IV	studio	Mountains	27.85	33.70	1 680	56 613
A 504	IV	studio	Mountains	27.85	33.70	1 680	56 613
A 505	IV	studio	Mountains	30.06	36.37	1 680	61 106
A 506	IV	studio	Mountains	33.30	40.29	1 680	67 692
A 509	IV	2 rooms	Mountains	53.88	65.19	1 680	109 527
A 601	V	2 rooms	Mountains	52.85	63.95	1 790	114 468
A 602	V	studio	Mountains	23.40	28.31	1 790	50 682
A 603	V	studio	Mountains	23.40	28.31	1 790	50 682
A 604	V	studio	Mountains	23.40	28.31	1 790	50 682
A 605	V	studio	Mountains	30.60	37.03	1 790	66 277
A 606	V	studio	Mountains	27.11	32.80	1 790	58 718
A 607	V	studio	Mountains	33.06	40.00	1 790	71 605
A 608	V	studio	Mountains	33.06	40.00	1 790	71 605
A 609	V	2 rooms	Mountains	42.59	51.53	1 790	92 246
A 701	VI	studio	Mountains	27.10	32.79	1 790	58 696
A 702	VI	studio	Mountains	23.40	28.31	1 790	50 682
A 703	VI	studio	Mountains	25.81	31.23	1 790	55 902
A 704	VI	studio	Mountains	30.50	36.91	1 790	66 060
A 705	VI	studio	Mountains	29.25	35.39	1 790	63 353
B 101	groundfloor	studio	Mountains	31.13	37.67	1 440	54 241
B 102	groundfloor	studio	Mountains	32.29	39.07	1 440	56 262
B 103	groundfloor	studio	Mountains	29.75	36.00	1 440	51 836
B 104	groundfloor	studio	Mountains	41.05	49.67	1 440	71 526
B 105	groundfloor	2 rooms	Mountains	45.36	54.89	1 440	79 035
B 107	groundfloor	studio	Mountains	41.06	49.68	1 440	71 543
B 108	groundfloor	studio	Mountains	29.75	36.00	1 440	51 836
B 109	groundfloor	studio	Mountains	32.29	39.07	1 440	56 262
B 110	groundfloor	studio	Mountains	31.13	37.67	1 440	54 241
B 201	I	studio	Mountains	30.51	36.92	1 680	62 021
B 202	I	studio	Mountains	35.25	42.65	1 680	71 656
B 203	I	studio	Mountains	33.88	40.99	1 680	68 871
B 204	I	studio	Mountains	41.01	49.62	1 680	83 365
B 205	I	2 rooms	Mountains	45.40	54.93	1 680	92 289

B 206	I	2 rooms	Mountains	45.40	54.93	1 680	92 289
B 207	I	studio	Mountains	39.86	48.23	1 680	81 027
B 208	I	studio	Mountains	32.77	39.65	1 680	66 615
B 209	I	studio	Mountains	35.25	42.65	1 680	71 656
B 210	I	studio	Mountains	30.51	36.92	1 680	62 021
B 301	II	studio	Mountains	30.51	36.92	1 680	62 021
B 302	II	studio	Mountains	35.25	42.65	1 680	71 656
B 303	II	studio	Mountains	33.88	40.99	1 680	68 871
B 304	II	studio	Mountains	41.01	49.62	1 680	83 365
B 305	II	2 rooms	Mountains	45.40	54.93	1 680	92 289
B 306	II	2 rooms	Mountains	45.40	54.93	1 680	92 289
B 307	II	studio	Mountains	39.86	48.23	1 680	81 027
B 308	II	studio	Mountains	32.77	39.65	1 680	66 615
B 309	II	studio	Mountains	35.25	42.65	1 680	71 656
B 310	II	studio	Mountains	30.51	36.92	1 680	62 021
B 401	III	studio	Mountains	30.51	36.92	1 680	62 021
B 402	III	studio	Mountains	35.25	42.65	1 680	71 656
B 403	III	studio	Mountains	33.88	40.99	1 680	68 871
B 404	III	studio	Mountains	41.01	49.62	1 680	83 365
B 405	III	2 rooms	Mountains	45.40	54.93	1 680	92 289
B 406	III	2 rooms	Mountains	45.40	54.93	1 680	92 289
B 407	III	studio	Mountains	39.86	48.23	1 680	81 027
B 408	III	studio	Mountains	32.77	39.65	1 680	66 615
B 409	III	studio	Mountains	35.25	42.65	1 680	71 656
B 410	III	studio	Mountains	30.51	36.92	1 680	62 021
B 501	IV	studio	Mountains	30.51	36.92	1 680	62 021
B 502	IV	studio	Mountains	35.25	42.65	1 680	71 656
B 503	IV	studio	Mountains	33.88	40.99	1 680	68 871
B 504	IV	studio	Mountains	41.01	49.62	1 680	83 365
B 505	IV	2 rooms	Mountains	45.40	54.93	1 680	92 289
B 506	IV	2 rooms	Mountains	45.40	54.93	1 680	92 289
B 507	IV	studio	Mountains	39.86	48.23	1 680	81 027
B 508	IV	studio	Mountains	32.77	39.65	1 680	66 615
B 509	IV	studio	Mountains	35.25	42.65	1 680	71 656
B 510	IV	studio	Mountains	30.51	36.92	1 680	62 021
B 601	V	studio	Mountains	24.46	29.60	1 790	52 978
B 602	V	studio	Mountains	32.61	39.46	1 790	70 630
B 603	V	studio	Mountains	30.03	36.34	1 790	65 042
B 604	V	studio	Mountains	38.63	46.74	1 790	83 669
B 605	V	studio	Mountains	43.89	53.11	1 790	95 061
B 606	V	studio	Mountains	43.89	53.11	1 790	95 061
B 607	V	studio	Mountains	38.58	46.68	1 790	83 560
B 608	V	studio	Mountains	30.04	36.35	1 790	65 064
B 609	V	studio	Mountains	32.61	39.46	1 790	70 630
B 610	V	studio	Mountains	24.46	29.60	1 790	52 978
B 701	VI	2 rooms	Mountains	75.04	90.80	1 790	162 529
B 702	VI	2 rooms	Mountains	70.72	85.57	1 790	153 172
C 101	groundfloor	2 rooms	Mountains	50.55	61.17	1 440	88 078
C 102	groundfloor	studio	Mountains	43.54	52.68	1 440	75 864
C 103	groundfloor	2 rooms	Mountains	52.83	63.92	1 440	92 051
C 104	groundfloor	studio	Mountains	37.68	45.59	1 440	65 654
C 105	groundfloor	studio	Mountains	43.54	52.68	1 440	75 864

C 106	groundfloor	2 rooms	Mountains	50.55	61.17	1 440	88 078
C 201	I	2 rooms	Mountains	50.55	61.17	1 680	102 758
C 202	I	studio	Mountains	43.54	52.68	1 680	88 508
C 203	I	2 rooms	Mountains	53.83	65.13	1 680	109 426
C 204	I	2 rooms	Mountains	53.83	65.13	1 680	109 426
C 205	I	studio	Mountains	43.54	52.68	1 680	88 508
C 206	I	2 rooms	Mountains	50.55	61.17	1 680	102 758
C 301	II	2 rooms	Mountains	50.55	61.17	1 680	102 758
C 302	II	studio	Mountains	43.54	52.68	1 680	88 508
C 303	II	2 rooms	Mountains	53.83	65.13	1 680	109 426
C 304	II	2 rooms	Mountains	53.83	65.13	1 680	109 426
C 305	II	studio	Mountains	43.54	52.68	1 680	88 508
C 306	II	2 rooms	Mountains	50.55	61.17	1 680	102 758
C 401	III	2 rooms	Mountains	50.55	61.17	1 680	102 758
C 402	III	studio	Mountains	43.54	52.68	1 680	88 508
C 403	III	2 rooms	Mountains	53.83	65.13	1 680	109 426
C 404	III	2 rooms	Mountains	53.83	65.13	1 680	109 426
C 405	III	studio	Mountains	43.54	52.68	1 680	88 508
C 406	III	2 rooms	Mountains	50.55	61.17	1 680	102 758
C 501	IV	2 rooms	Mountains	50.55	61.17	1 680	102 758
C 502	IV	studio	Mountains	43.54	52.68	1 680	88 508
C 503	IV	2 rooms	Mountains	53.83	65.13	1 680	109 426
C 504	IV	2 rooms	Mountains	53.83	65.13	1 680	109 426
C 505	IV	studio	Mountains	43.54	52.68	1 680	88 508
C 506	IV	2 rooms	Mountains	50.55	61.17	1 680	102 758
C 601	V	studio	Mountains	26.64	32.23	1 790	57 700
C 602	V	2 rooms	Mountains	59.66	72.19	1 790	129 218
C 603	V	studio	Mountains	47.37	57.32	1 790	102 599
C 604	V	studio	Mountains	47.37	57.32	1 790	102 599
C 605	V	2 rooms	Mountains	59.66	72.19	1 790	129 218
C 606	V	studio	Mountains	36.04	43.61	1 790	78 059
C 701	VI	2 rooms	Mountains	77.96	94.33	1 790	168 854
C 702	VI	2 rooms	Mountains	75.41	91.25	1 790	163 331
D 101	groundfloor	2 rooms	Mountains	39.79	48.15	1 440	69 330
D 102	groundfloor	studio	Mountains	38.19	46.21	1 440	66 542
D 103	groundfloor	studio	Mountains	37.49	45.36	1 440	65 323
D 104	groundfloor	studio	Mountains	26.10	31.58	1 440	45 477
D 105	groundfloor	studio	Mountains	38.19	46.21	1 440	66 542
D 106	groundfloor	2 rooms	Mountains	39.79	48.15	1 440	69 330
D 201	I	2 rooms	Mountains	39.79	48.15	1 680	80 885
D 202	I	studio	Mountains	38.19	46.21	1 680	77 633
D 203	I	studio	Mountains	37.78	45.71	1 680	76 799
D 204	I	studio	Mountains	37.78	45.71	1 680	76 799
D 205	I	studio	Mountains	38.19	46.21	1 680	77 633
D 206	I	2 rooms	Mountains	39.79	48.15	1 680	80 885
D 301	II	2 rooms	Mountains	39.79	48.15	1 680	80 885
D 302	II	studio	Mountains	38.19	46.21	1 680	77 633
D 306	II	2 rooms	Mountains	39.79	48.15	1 680	80 885
D 401	III	2 rooms	Mountains	39.79	48.15	1 680	80 885
D 402	III	studio	Mountains	38.19	46.21	1 680	77 633
D 403	III	studio	Mountains	37.78	45.71	1 680	76 799
D 404	III	studio	Mountains	37.78	45.71	1 680	76 799

D 405	III	studio	Mountains	38.19	46.21	1 680	77 633
D 406	III	2 rooms	Mountains	39.79	48.15	1 680	80 885
D 501	IV	2 rooms	Mountains	39.79	48.15	1 680	80 885
D 502	IV	studio	Mountains	38.19	46.21	1 680	77 633
D 503	IV	studio	Mountains	37.78	45.71	1 680	76 799
D 504	IV	studio	Mountains	37.78	45.71	1 680	76 799
D 505	IV	studio	Mountains	38.19	46.21	1 680	77 633
D 506	IV	2 rooms	Mountains	39.79	48.15	1 680	80 885
D 601	V	studio	Mountains	36.04	43.61	1 790	78 059
D 602	V	studio	Mountains	36.79	44.52	1 790	79 683
D 603	V	studio	Mountains	35.82	43.34	1 790	77 583
D 604	V	studio	Mountains	35.82	43.34	1 790	77 583
D 605	V	studio	Mountains	36.79	44.52	1 790	79 683
D 606	V	studio	Mountains	36.04	43.61	1 790	78 059
D 701	VI	2 rooms	Mountains	56.76	68.68	1 790	122 936
D 702	VI	2 rooms	Mountains	54.30	65.70	1 790	117 608
E 101	groundfloor	2 rooms	Mountains	24.26	29.35	1 440	42 271
E 102	groundfloor	studio	Mountains	64.31	77.82	1 440	112 054
E 103	groundfloor	studio	Mountains	32.32	39.11	1 440	56 314
E 104	groundfloor	studio	Mountains	64.46	78.00	1 440	112 315
E 105	groundfloor	studio	Mountains	24.26	29.35	1 440	42 271
E 201	I	2 rooms	Mountains	24.23	29.32	1 680	49 255
E 202	I	studio	Mountains	64.31	77.82	1 680	130 729
E 203	I	studio	Mountains	51.29	62.06	1 680	104 262
E 204	I	studio	Mountains	64.31	77.82	1 680	130 729
E 205	I	studio	Mountains	24.23	29.32	1 680	49 255
E 301	II	2 rooms	Mountains	24.23	29.32	1 680	49 255
E 302	II	studio	Mountains	64.31	77.82	1 680	130 729
E 303	II	studio	Mountains	51.29	62.06	1 680	104 262
E 304	II	studio	Mountains	64.31	77.82	1 680	130 729
E 305	II	studio	Mountains	24.23	29.32	1 680	49 255
E 401	III	2 rooms	Mountains	24.23	29.32	1 680	49 255
E 402	III	studio	Mountains	64.31	77.82	1 680	130 729
E 404	III	studio	Mountains	64.31	77.82	1 680	130 729
E 405	III	studio	Mountains	24.23	29.32	1 680	49 255
E 501	IV	studio	Mountains	24.23	29.32	1 680	49 255
E 502	IV	studio	Mountains	64.31	77.82	1 680	130 729
E 503	IV	studio	Mountains	51.29	62.06	1 680	104 262
E 504	IV	studio	Mountains	64.31	77.82	1 680	130 729
E 505	IV	studio	Mountains	24.23	29.32	1 680	49 255
E 601	V	studio	Mountains	34.24	41.43	1 790	74 160
E 602	V	studio	Mountains	46.90	56.75	1 790	101 581
E 603	V	studio	Mountains	51.44	62.24	1 790	111 414
E 604	V	studio	Mountains	46.90	56.75	1 790	101 581
E 605	V	studio	Mountains	34.24	41.43	1 790	74 160
E 701	VI	2 rooms	Mountains	46.78	56.60	1 790	101 321
E 702	VI	2 rooms	Mountains	51.75	62.62	1 790	112 085
E 703	VI	2 rooms	Mountains	44.25	53.54	1 790	95 841
F 101	groundfloor	studio	Mountains	46.84	56.68	1 440	81 614
F 102	groundfloor	studio	Mountains	36.26	43.87	1 440	63 179
F 103	groundfloor	studio	Mountains	36.24	43.85	1 440	63 145
F 104	groundfloor	studio	Mountains	20.16	24.39	1 440	35 127

F 105	groundfloor	2 rooms	Mountains	65.89	79.73	1 440	114 807
F 106	groundfloor	2 rooms	Mountains	59.23	71.67	1 440	103 202
F 108	groundfloor	2 rooms	Mountains	50.22	60.77	1 440	87 503
F 109	groundfloor	2 rooms	Mountains	36.45	44.10	1 440	63 510
F 110	groundfloor	studio	Mountains	69.59	84.20	1 440	121 254
F 111	groundfloor	studio	Mountains	21.53	26.05	1 440	37 514
F 112	groundfloor	studio	Mountains	46.84	56.68	1 440	81 614
F 201	I	studio	Mountains	46.83	56.66	1 680	95 196
F 202	I	studio	Mountains	36.26	43.87	1 680	73 709
F 203	I	studio	Mountains	36.24	43.85	1 680	73 669
F 204	I	studio	Mountains	20.16	24.39	1 680	40 981
F 205	I	studio	Mountains	65.23	78.93	1 680	132 600
F 206	I	studio	Mountains	59.23	71.67	1 680	120 403
F 207	I	studio	Mountains	21.20	25.65	1 680	43 095
F 208	I	studio	Mountains	50.22	60.77	1 680	102 087
F 209	I	studio	Mountains	50.22	60.77	1 680	102 087
F 210	I	studio	Mountains	69.59	84.20	1 680	141 463
F 211	I	studio	Mountains	21.53	26.05	1 680	43 766
F 212	I	studio	Mountains	46.83	56.66	1 680	95 196
F 301	II	studio	Mountains	46.83	56.66	1 680	95 196
F 302	II	studio	Mountains	36.26	43.87	1 680	73 709
F 303	II	studio	Mountains	36.24	43.85	1 680	73 669
F 305	II	studio	Mountains	65.23	78.93	1 680	132 600
F 306	II	studio	Mountains	59.23	71.67	1 680	120 403
F 307	II	studio	Mountains	21.20	25.65	1 680	43 095
F 308	II	studio	Mountains	50.22	60.77	1 680	102 087
F 309	II	studio	Mountains	50.22	60.77	1 680	102 087
F 310	II	studio	Mountains	69.59	84.20	1 680	141 463
F 311	II	studio	Mountains	21.53	26.05	1 680	43 766
F 312	II	studio	Mountains	46.83	56.66	1 680	95 196
F 401	III	studio	Mountains	46.83	56.66	1 680	95 196
F 402	III	studio	Mountains	36.26	43.87	1 680	73 709
F 403	III	studio	Mountains	36.24	43.85	1 680	73 669
F 405	III	studio	Mountains	65.23	78.93	1 680	132 600
F 406	III	studio	Mountains	59.23	71.67	1 680	120 403
F 407	III	studio	Mountains	21.20	25.65	1 680	43 095
F 408	III	studio	Mountains	50.22	60.77	1 680	102 087
F 409	III	studio	Mountains	50.22	60.77	1 680	102 087
F 410	III	studio	Mountains	69.59	84.20	1 680	141 463
F 411	III	studio	Mountains	21.53	26.05	1 680	43 766
F 412	III	studio	Mountains	46.83	56.66	1 680	95 196
F 501	IV	studio	Mountains	46.83	56.66	1 680	95 196
F 502	IV	studio	Mountains	36.26	43.87	1 680	73 709
F 503	IV	studio	Mountains	36.24	43.85	1 680	73 669
F 505	IV	studio	Mountains	65.23	78.93	1 680	132 600
F 506	IV	studio	Mountains	59.23	71.67	1 680	120 403
F 507	IV	studio	Mountains	21.20	25.65	1 680	43 095
F 508	IV	studio	Mountains	50.22	60.77	1 680	102 087
F 509	IV	studio	Mountains	50.22	60.77	1 680	102 087
F 510	IV	studio	Mountains	69.59	84.20	1 680	141 463
F 511	IV	studio	Mountains	21.53	26.05	1 680	43 766
F 512	IV	studio	Mountains	46.83	56.66	1 680	95 196

F 601	V	studio	Mountains	41.20	49.85	1 790	89 235
F 602	V	studio	Mountains	36.38	44.02	1 790	78 795
F 603	V	studio	Mountains	34.56	41.82	1 790	74 854
F 606	V	studio	Mountains	55.93	67.68	1 790	121 139
F 607	V	studio	Mountains	21.20	25.65	1 790	45 917
F 608	V	studio	Mountains	46.76	56.58	1 790	101 277
F 609	V	studio	Mountains	46.76	56.58	1 790	101 277
F 610	V	studio	Mountains	66.10	79.98	1 790	143 166
F 611	V	studio	Mountains	21.70	26.26	1 790	47 000
F 612	V	studio	Mountains	41.20	49.85	1 790	89 235
F 701	VI	studio	Mountains	38.79	46.94	1 790	84 015
F 702	VI	studio	Mountains	42.33	51.22	1 790	91 683
F 703	VI	studio	Mountains	42.32	51.21	1 790	91 661
F 704	VI	studio	Mountains	38.79	46.94	1 790	84 015



Borovec Heights 1, Borovets

Ap. No	Floor	Type	View	Living Area (in sq.m.)	Total Area (in sq.m.)	Pice per sq.m. (Euro)	Total Price (Euro)
1	II	2 rooms	forest	43.83	52.78	1 525	80 500
2	II	2 rooms	forest	60.28	72.35	1 526	110 380
3	II	2 rooms	forest	74.00	88.68	1 526	135 330
5	I	3 rooms	forest	59.90	72.63	1 526	110 800
6	I	3 rooms	forest	70.00	85.57	1 522	130 200
7	I	2 rooms	forest	47.70	58.33	1 523	88 500
18	I	studio	forest	28.55	34.40	1 539	52 900
23	I	studio	forest	49.48	59.07	1 515	89 500
36	II	studio	forest	49.48	60.38	1 522	91 900



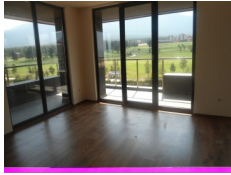
Edeland Ridge, Bansko

Ap. No	Floor	Type	View	Living Area (in sq.m.)	Total Area (in sq.m.)	Pice per sq.m. (Euro)	Total Price (Euro)
A101	groundfloor	studio	Garden	28.98	34.09	1 130	38 522
A102	groundfloor	studio	Garden	28.98	34.09	1 130	38 522
A103	groundfloor	studio	Garden	28.98	34.09	1 130	38 522
A104	groundfloor	studio	Garden	28.98	34.09	1 130	38 522
A105	groundfloor	studio	Garden	28.98	34.09	1 130	38 522
B101	groundfloor	studio	Garden	28.98	34.09	1 175	40 056
B102	groundfloor	studio	Garden	28.98	34.09	1 175	40 056
B103	groundfloor	studio	Garden	28.98	34.09	1 175	40 056
B105	groundfloor	studio	Garden	28.98	34.09	1 175	40 056
B106	groundfloor	studio	Garden	28.98	34.09	1 175	40 056
B107	groundfloor	studio	Garden	28.98	34.09	1 175	40 056

C102	groundfloor	studio	Garden	28.43	33.45	1 175	39 304
C103	groundfloor	studio	Garden	28.43	33.45	1 175	39 304
C104	groundfloor	studio	Garden	28.43	33.45	1 175	39 304
C105	groundfloor	studio	Garden	28.43	33.45	1 175	39 304
D109	groundfloor	studio	Garden	28.43	33.45	1 175	39 304
D110	groundfloor	studio	Garden	28.43	33.45	1 175	39 304
D111	groundfloor	studio	Garden	28.43	33.45	1 175	39 304
A201	I	studio	Garden	31.58	37.15	1 190	44 209
A204	I	studio	Garden	37.43	44.03	1 190	52 396
A205	I	2 rooms	Garden	68.92	81.08	1 100	89 188
A206	I	2 rooms	Mountains	59.00	69.41	1 230	85 374
A208	I	studio	Mountains	29.61	34.84	1 350	47 034
A210	I	2 rooms	Mountains	59.24	69.69	1 230	85 719
B201	I	studio	Mountains	29.61	34.84	1 350	47 034
B202	I	studio	Mountains	29.61	34.84	1 350	47 034
B203	I	studio	Mountains	29.61	34.84	1 350	47 034
B204	I	2 rooms	Mountains	59.24	69.69	1 230	85 719
B207	I	studio	Garden	37.43	44.03	1 215	53 496
B208	I	studio	Garden	37.43	44.03	1 215	53 496
B209	I	2 rooms	Garden	68.92	81.08	1 100	89 188
C201	I	studio	Garden	30.97	36.44	1 215	44 275
C205	I	2 rooms	Garden	67.41	79.31	1 175	93 189
C206	I	2 rooms	Mountains, Fields	68.33	80.39	1 230	98 880
C209	I	studio	Mountains, Fields	37.14	43.69	1 360	59 418
C210	I	2 rooms	Mountains, Fields	68.33	80.39	1 230	98 880
D201	I	studio	Mountains, Fields	37.14	43.69	1 360	59 418
D202	I	studio	Mountains, Fields	37.14	43.69	1 360	59 418
D203	I	studio	Mountains, Fields	37.14	43.69	1 360	59 418
D204	I	2 rooms	Mountains, Fields	68.33	80.39	1 230	98 880
D206	I	studio	Garden	36.67	43.14	1 215	52 415
D207	I	studio	Garden	36.67	43.14	1 215	52 415
D208	I	studio	Garden	36.67	43.14	1 215	52 415
D209	I	2 rooms	Garden	67.41	79.31	1 175	93 189
A301	II	studio	Garden	31.82	37.44	1 220	45 677
A302	II	2 rooms	Garden	49.24	57.93	1 220	70 675
A303	II	2 rooms	Garden	49.24	57.93	1 220	70 675
A304	II	3 rooms	Garden	66.72	78.49	1 220	95 758
A305	II	3 rooms	Mountains	66.26	77.95	1 500	116 925
A306	II	2 rooms	Mountains	48.90	57.53	1 500	86 295
A307	II	2 rooms	Mountains	48.90	57.53	1 500	86 295
A308	II	3 rooms	Mountains	66.26	77.95	1 500	116 925
B301	II	studio	Mountains	31.61	37.19	1 500	55 785
B302	II	2 rooms	Mountains	48.90	57.53	1 500	86 295
B303	II	2 rooms	Mountains	48.90	57.53	1 500	86 295
B304	II	3 rooms	Mountains	66.26	77.95	1 500	116 925
B308	II	3 rooms	Garden	66.72	78.49	1 250	98 113
C301	II	studio	Garden	30.97	36.44	1 250	45 550
C302	II	2 rooms	Garden	47.91	56.37	1 250	70 463
C303	II	2 rooms	Garden	47.91	56.37	1 250	70 463
C304	II	3 rooms	Garden	64.91	76.37	1 250	95 463
C306	II	2 rooms	Mountains, Fields	48.52	57.08	1 400	79 912
C307	II	2 rooms	Mountains, Fields	48.52	57.08	1 400	79 912

C308	II	3 rooms	Mountains, Fields	65.74	77.34	1 400	108 276
D301	II	studio	Mountains, Fields	31.37	36.90	1 400	51 660
D302	II	2 rooms	Mountains, Fields	48.52	57.08	1 400	79 912
D303	II	2 rooms	Mountains, Fields	48.52	57.08	1 400	79 912
D304	II	3 rooms	Mountains, Fields	65.74	77.34	1 400	108 276
D308	II	3 rooms	Garden	64.91	76.37	1 250	95 463
A401	III	studio	Garden	31.61	37.19	1 290	47 975
A402	III	2 rooms	Garden	51.16	60.19	1 290	77 645
A403	III	2 rooms	Garden	51.16	60.19	1 290	77 645
A404	III	3 rooms	Garden	66.26	77.95	1 290	100 556
A405	III	3 rooms	Mountains	66.72	78.49	1 545	121 267
A406	III	2 rooms	Mountains	51.52	60.61	1 545	93 642
A408	III	3 rooms	Mountains	66.72	78.49	1 545	121 267
B401	III	studio	Mountains	31.82	37.44	1 545	57 845
B402	III	2 rooms	Mountains	51.52	60.61	1 545	93 642
B403	III	2 rooms	Mountains	51.52	60.61	1 545	93 642
B404	III	3 rooms	Mountains	66.72	78.49	1 545	121 267
B405	III	3 rooms	Garden, Mountains	66.26	77.95	1 440	112 248
B406	III	2 rooms	Garden, Mountains	51.16	60.19	1 440	86 674
B408	III	3 rooms	Garden, Mountains	66.26	77.95	1 440	112 248
C401	III	studio	Garden, Mountains	30.97	36.44	1 440	52 474
C402	III	2 rooms	Garden, Mountains	50.12	58.97	1 440	84 917
C403	III	2 rooms	Garden, Mountains	50.12	58.97	1 440	84 917
C404	III	3 rooms	Garden, Mountains	64.91	76.37	1 440	109 973
C406	III	2 rooms	Mountains, Fields	50.76	59.72	1 440	85 997
C407	III	2 rooms	Mountains, Fields	50.76	59.72	1 440	85 997
C408	III	3 rooms	Mountains, Fields	65.74	77.34	1 440	111 370
D401	III	studio	Mountains, Fields	31.37	36.90	1 440	53 136
D402	III	2 rooms	Mountains, Fields	50.76	59.72	1 440	85 997
D403	III	2 rooms	Mountains, Fields	50.76	59.72	1 440	85 997
D404	III	3 rooms	Mountains, Fields	65.74	77.34	1 440	111 370
D406	III	2 rooms	Garden, Mountains	50.12	58.97	1 440	84 917
D407	III	2 rooms	Garden, Mountains	50.12	58.97	1 440	84 917
D408	III	3 rooms	Garden, Mountains	64.91	76.37	1 440	109 973
A501	IV	studio	Mountains, Garden	31.30	36.82	1 520	55 966
A502	IV	4 rooms	Mountains, Garden	90.48	106.45	1 520	161 804
A503	IV	4 rooms	Mountains, Garden	90.77	106.79	1 520	162 321
A505	IV	studio	Mountains	32.49	38.22	1 590	60 770
A506	IV	4 rooms	Mountains	91.45	107.59	1 590	171 068
A507	IV	4 rooms	Mountains	91.11	107.19	1 590	170 432
A508	IV	studio	Mountains	32.49	38.22	1 590	60 770
B501	IV	studio	Mountains	31.50	37.06	1 590	58 925
B502	IV	4 rooms	Mountains	91.17	107.26	1 590	170 543
B503	IV	4 rooms	Mountains	91.45	107.59	1 590	171 068
B505	IV	studio	Mountains, Garden	32.27	37.97	1 520	57 714
B506	IV	4 rooms	Mountains, Garden	90.77	106.79	1 520	162 321
B507	IV	4 rooms	Mountains, Garden	90.48	106.45	1 520	161 804
B508	IV	studio	Mountains, Garden	32.27	37.97	1 520	57 714
C501	IV	studio	Mountains, Garden	30.69	36.11	1 520	54 887
C502	IV	4 rooms	Mountains, Garden	88.48	104.09	1 520	158 217
C503	IV	4 rooms	Mountains, Garden	88.76	104.42	1 520	158 718
C505	IV	studio	Mountains, Fields	32.04	37.69	1 485	55 970

C506	IV	4 rooms	Mountains, Fields	89.99	105.87	1 485	157 217
C507	IV	4 rooms	Mountains, Fields	89.71	105.54	1 485	156 727
C508	IV	studio	Mountains, Fields	32.04	37.69	1 485	55 970
D501	IV	studio	Mountains, Fields	31.06	36.54	1 485	54 262
D502	IV	4 rooms	Mountains, Fields	89.71	105.54	1 485	156 727
D503	IV	4 rooms	Mountains, Fields	89.99	105.87	1 485	157 217
D504	IV	studio	Mountains, Fields	32.04	37.69	1 485	55 970
D506	IV	4 rooms	Mountains, Garden	88.76	104.42	1 520	158 718
D507	IV	4 rooms	Mountains, Garden	88.48	104.09	1 520	158 217
D508	IV	studio	Mountains, Garden	31.65	37.24	1 520	56 605



Cornelia 2, Bansko

Ap. No	Floor	Type	View	Living Area (in sq.m.)	Total Area (in sq.m.)	Pice per sq.m. (Euro)	Total Price (Euro)
1-02A/B03	groundfloor	2 rooms		51.82	76.08	597	45 385
2-02S/A16	I	studio		32.51	38.04	791	30 073
2-04A/A14	I	2 rooms		49.58	58.36	888	51 797
3-08S/B21	II	studio		32.51	38.13	786	29 958
3-12A/B23	II	2 rooms		49.58	58.68	951	55 781
4-01A/A35	III	2 rooms		49.58	58.02	689	39 958
4-03A/A31	III	2 rooms		49.58	58.53	786	45 987
4-06B/A32	III	3 rooms		73.03	86.09	1 019	87 683
4-09A/B32	III	2 rooms		49.58	58.68	786	46 105
5-01A/A43	IV	2 rooms		55.93	90.40	857	77 499
5-03A/A42	IV	2 rooms		55.79	89.43	941	84 121
5-05S/B44	IV	2 rooms		32.45	60.48	732	44 297



Ovinache Holiday Village, Bansko

Ap. No	Floor	Type	View	Living Area (in sq.m.)	Total Area (in sq.m.)	Pice per sq.m. (Euro)	Total Price (Euro)
Dom 1-1 typ B	0+1	3 rooms	Pirin mountain	79.05	93.00	1 450	134 850
Dom 1-3 typ B	0+1	3 rooms	Pirin mountain	79.05	93.00	1 450	134 850
Dom 1-4 typ 2A	0+1	4 rooms	Pirin mountain	158.10	186.00	1 450	269 700
Dom 1-4 typ B	0+1	3 rooms	Pirin mountain	79.05	93.00	1 450	134 850
Dom 1-4 typ 2B	0+1	3 rooms	Pirin mountain	79.05	93.00	1 450	134 850
Dom 1-6 typ 1	0+1	6 rooms	Pirin mountain	188.89	222.22	1 450	322 219
Dom ?	0+1	3 rooms	Pirin mountain	85.00	100.00	1 450	145 000
Dom ?	0+1	3 rooms	Pirin mountain	85.00	100.00	1 450	145 000
Dom 1.2	0+1	3 rooms	Pirin mountain	85.19	100.22	1 700	170 374
Dom 2.3	0+1	3 rooms	Pirin mountain	85.54	100.63	1 700	171 071
Apart. 101	groundfloor	studio	Pirin mountain	34.45	40.53	1 650	66 875

Apart. 103	groundfloor	studio	Pirin mountain	34.29	40.34	1 650	66 561
Apart. 104	groundfloor	studio	Pirin mountain	34.37	40.44	1 650	66 726
Apart. 105	groundfloor	studio	Pirin mountain	34.37	40.44	1 650	66 726
Apart. 106	groundfloor	studio	Pirin mountain	34.35	40.41	1 650	66 677
Apart. 107	groundfloor	studio	Pirin mountain	33.52	39.44	1 650	65 076
Apart. 108	groundfloor	studio	Pirin mountain	34.43	40.50	1 650	66 825
Apart. 109	groundfloor	studio	Pirin mountain	34.43	40.51	1 650	66 842
Apart. 110	groundfloor	studio	Pirin mountain	34.54	40.63	1 650	67 040
Apart. 201	I	2 rooms	Pirin mountain	51.00	60.00	1 700	102 000
Apart. 203	I	2 rooms	Pirin mountain	51.00	60.00	1 700	102 000
Apart. 204	I	2 rooms	Pirin mountain	51.00	60.00	1 700	102 000
Apart. 205	I	2 rooms	Pirin mountain	51.00	60.00	1 700	102 000
Apart. 206	I	2 rooms	Pirin mountain	51.00	60.00	1 700	102 000
Apart. 207	I	2 rooms	Pirin mountain	51.00	60.00	1 700	102 000
Apart. 208	I	2 rooms	Pirin mountain	51.00	60.00	1 700	102 000
Apart. 209	I	2 rooms	Pirin mountain	51.00	60.00	1 700	102 000
Apart. 210	I	2 rooms	Pirin mountain	51.00	60.00	1 700	102 000



SUMMIT LODGE , Bansko



Kasjopea, Pamporovo

Ap. No	Floor	Type	View	Living Area (in sq.m.)	Total Area (in sq.m.)	Pice per sq.m. (Euro)	Total Price (Euro)
1-vip	0 + I	3 rooms	south	101.34	106.92	1 188	127 000
4-vip	0 + I	3 rooms	south	101.34	106.92	1 188	127 000
5-vip	0 + I	3 rooms	south	101.34	106.92	1 188	127 000
6	0 + I	3 rooms	south-west	101.34	106.92	1 188	125 000
7	0 + I	3 rooms	south-east	101.34	106.92	1 188	125 000
8	0 + I	3 rooms	south-west	101.34	106.92	1 188	125 000
9	0 + I	3 rooms	south-east	101.34	106.92	1 188	125 000
10	0 + I	3 rooms	south-west	101.34	106.92	1 188	125 000
11	0 + I	3 rooms	south-east	101.34	106.92	1 188	125 000
12	0 + I	3 rooms	south-east	101.34	106.92	1 188	125 000
13	0 + I	3 rooms	south-east	101.34	106.92	1 188	125 000